

45 Degree Channel

Tapelight Channel

Project Name:
Fixture Type:

DESCRIPTION

PreciseLED's aluminum channels are a required companion to our tape light modules. With excellent heat sinking and light diffusion capabilities, our channels can also be custom cut and/or painted to virtually any specification. The angled geometry of the 45 Degree Channel allows for many applications where the light source is to be directed at an angle, or to illuminate corners which often lack ambient light.

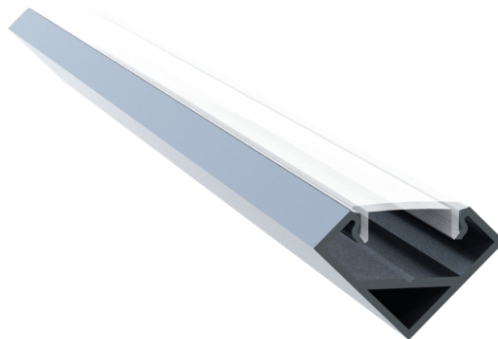
SPECIFICATIONS

- Dimensions: .72"W x .72" H
- Materials: Aluminum/PVC
- Maximum Width of LED Tape: .55"

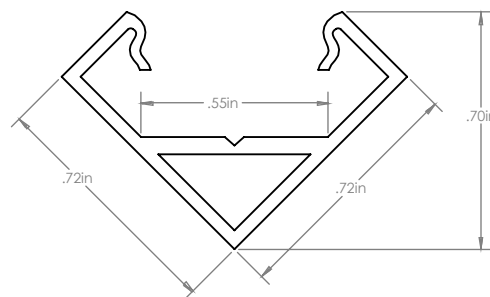
COMPATIBILITY

The 45 Degree channel is compatible with the following tape lights:

- Lo-Beam
- Lo-Beam Wet
- Beam
- Beam Wet
- Hi-Beam
- Hi-Beam Wet
- Hi-Beam RGB
- Hi-Beam RGB Wet
- Hi-Beam RGBW
- Hi Beam Hi Efficacy
- Cool Beam
- Ultra Beam



DIMENSIONS



FINISH



Aluminum



Powder coated
Black



Powder coated
White

ORDERING CODE

Example: 45DE-8-BK

Product	Length	Finish
45DE		
45DE	8 8 Feet XX Custom Length (in feet)	AL Aluminum (Standard) BK Powder Coated Black WT Powder Coated White

Note: All of the channels and lenses can be custom cut to any length with an accuracy of 1/8"

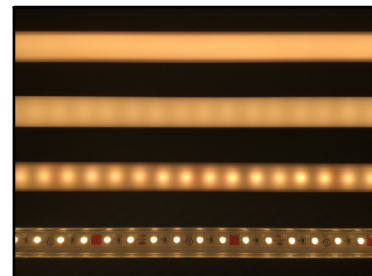
45 Degree Channel

ACCESSORIES:

Accessory	Product	Length
Clear Lens	45DE-CLNS	8 8 Feet XX Length ft in
Diffused Lens	45DE-DLNS	8 8 Feet XX Length ft in
Opal Lens	45DE-OLNS	8 8 Feet XX Length ft in
Clips/Screws (Recommended 1 set for every 2 ft length of channel)	45DE-CLIP	
End Caps	45DE-CAPS	
Beginning Caps (with holes)	45DE-CAPH	

Level of Spotlessness per Tape Light / Lens Combination

	Opal Lens	Diffuse Lens	Clear Lens
Lo-Beam	SS	SP	CL
Lo-Beam Wet	SP	SP	CL
Beam	SS	SL	CL
Beam Wet	SS	SS	CL
Hi-Beam	SP	SP	CL
Hi-Beam Wet	SP	SP	CL
Hi-Beam RGB	SP	SP	CL
Hi-Beam RGB Wet	SP	SP	CL
Hi-Beam RGBW	SP	SP	CL
Hi Beam Hi Efficacy	SL	SS	CL
Cool Beam	SL	SS	CL



SL = Spotless

SS = Slightly Spotty

SP = Spotty

CL = Clear