

Lo Beam

LED TAPE LIGHT

Project Name:

Fixture Type:

DESCRIPTION

All PreciseLED tape light products feature a flexible copper core and are cut and soldered to specified length in our factory. PreciseLED tape lights additionally have best-in-class color rendering, color consistency, and, when combined with our dimming drivers, dimming and flickering performance. Our LO-BEAM Tape Light is a designer favorite. This product is great for accenting stairwells, for cove lighting and other uses where small light output is needed.

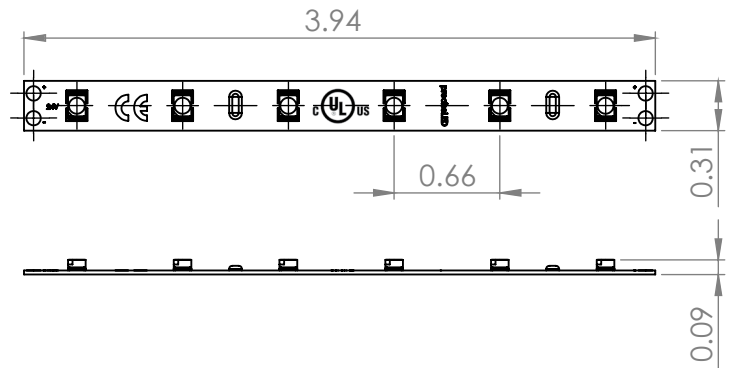


SPECIFICATIONS

- Voltage: 24V
- Watts per foot: 1.46W/ft
- Average Lumens per foot: 90.5 Lm/ft
- 3528 LED's
- 18 diodes/foot
- Dimmable using dimmable driver
- Backed with 3M Adhesive
- Ambient Temperature: -4°F ~ +113°F
- Humidity: 40% ~ 70% R
- Protection: IP20
- Tail end field cuttable every 3.94 Inches
- 50,000 Hours Lamp Life
- Max Run: 52.6 Feet
- 3 Step Binning Process
- CRI ≥ 95 , R_r ≥ 95 , R_g ≥ 100
- UL Listed for US and Canada
- 5 Year Warranty

Please see PreciseLED.com for warranty and installation information.

DIMENSIONS



LUMEN OUTPUT PER COLOR TEMPERATURE

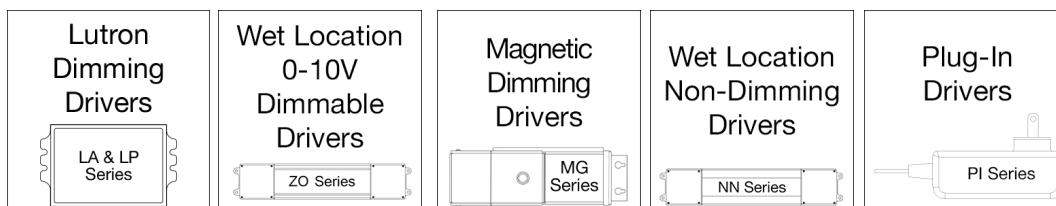
2700K	91 Lm/ft
3500K	90 Lm/ft

ORDERING CODE

Example: LOBE-16'-24V-95C-30K-EGNT

Product	Spool Length	Volts	CRI	Color Temperature	Ambience
LOBE	'ft "in Custom Length For ordering lengths, see page 3.	24V 24 Volts	95 95CRI	22K 2200K 24K 2400K 27K 2700K 30K 3000K 35K 3500K 40K 4000K	Standard EGNITE* *Below Black Body Curve For 3000K and below Click here for Egnite info.

COMPATIBLE TAPE LIGHT DRIVERS



Click [here](#) for a more detailed Driver Overview.

Lo Beam

LED TAPE LIGHT

Project Name:

Fixture Type:

Optional Wiring Configurations	Description	Ordering Code
	Custom Tail Wire Length	TAIW
	Custom Lead Wire Length	LEAW
	Tail Jumper Cable	JUMP
	2.1MM DC CONNECTOR (FEMALE)	PLGF
	2.1MM DC CONNECTOR (MALE)	PLGM

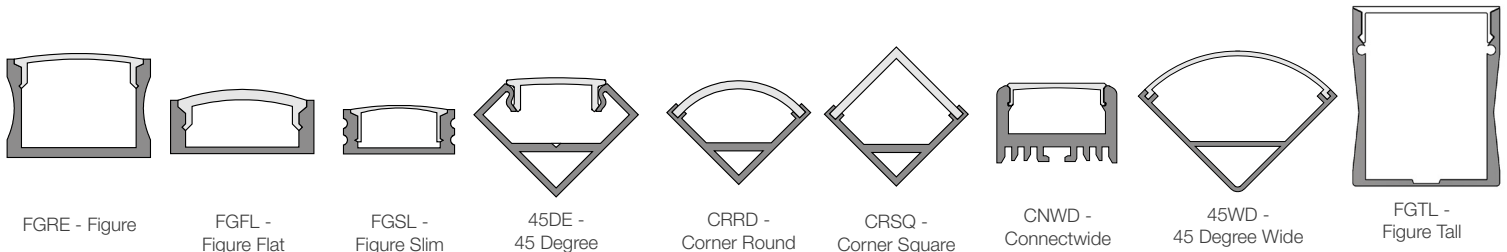
*Default wire length is 12", no number in front of ordering code indicates default length

Note: Solder points are secured with cable grips.

ORDERING CODE

Example: LOBE-16'-24V-95C-30K-EGNT-14TAIW

COMPATIBLE TAPE LIGHT CHANNELS



Click [here](#) to view our Tape Light Channels

Lo Beam

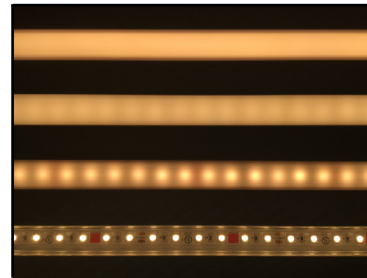
LED TAPE LIGHT

Project Name:

Fixture Type:

■ LEVEL OF SPOTLESSNESS PER CHANNEL/ LENS COMBINATION

	Opal Lens	Diffuse Lens	Clear Lens
FIGURE	SS	SS	CL
FIGURE SLIM	SP	SP	CL
FIGURE FLAT	SP	SP	CL
CONNECTWIDE	SP	SP	CL
45 DEGREE	SS	SP	CL
FIGURE TALL	SL	SL	CL



SL = Spotless

SS = Slightly Spotty

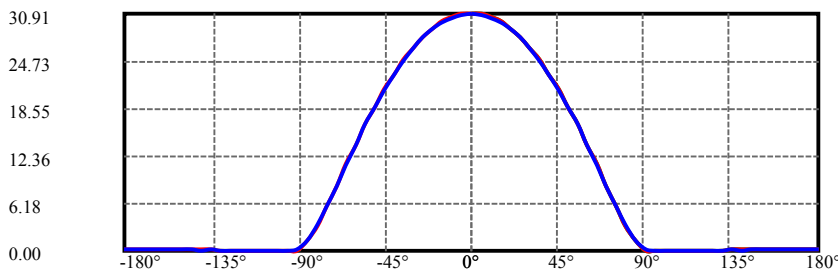
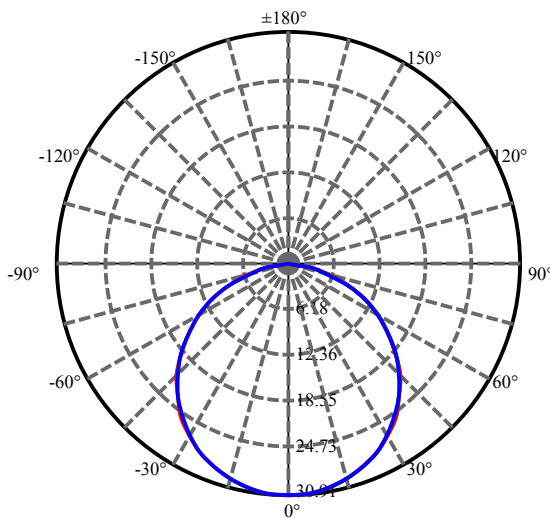
SP = Spotty

CL = Clear

■ TOTAL LUMEN OUTPUT FOR CHANNEL/ LENS COMBINATION

	Opal Lens	Diffuse Lens	Clear Lens
FIGURE	30%	51%	70%
FIGURE SLIM	39%	63%	86%
FIGURE FLAT	41%	63%	85%
CONNECTWIDE	26%	53%	67%
45 DEGREE	25%	49%	62%

■ LIGHT DISTRIBUTION CURVE



C0(Max):



C0/C180:



C90/C270:



Field angle(10%Imax):C0/180Left:80.6 Right:80.6

:C90/270Left:80.8 Right:80.8

Beam Angle(50%Imax):C0/180Left:57.0 Right:57.0

:C90/270Left:57.0 Right:57.0

Lo Beam

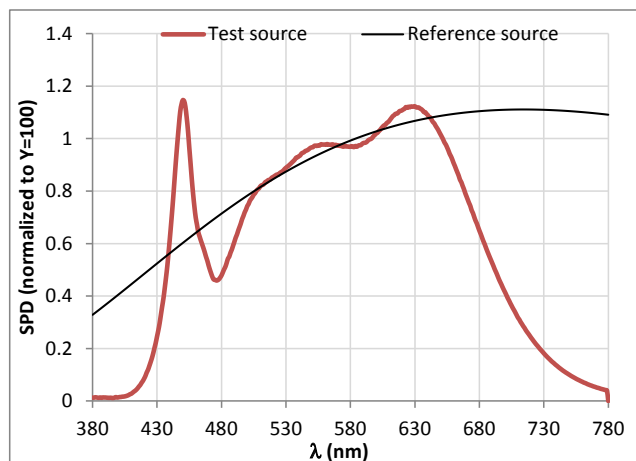
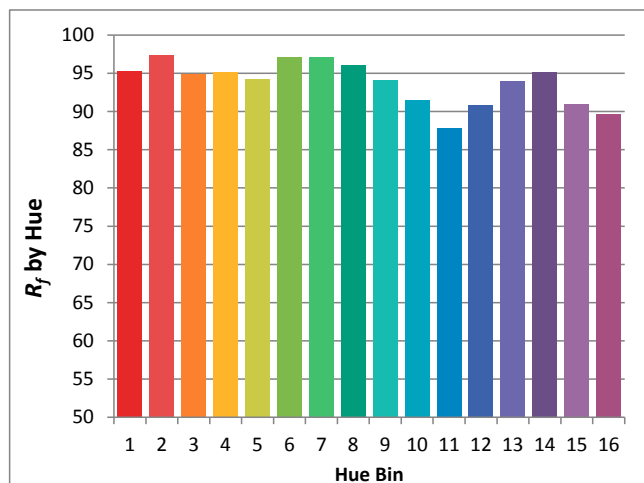
LED TAPE LIGHT

Project Name:

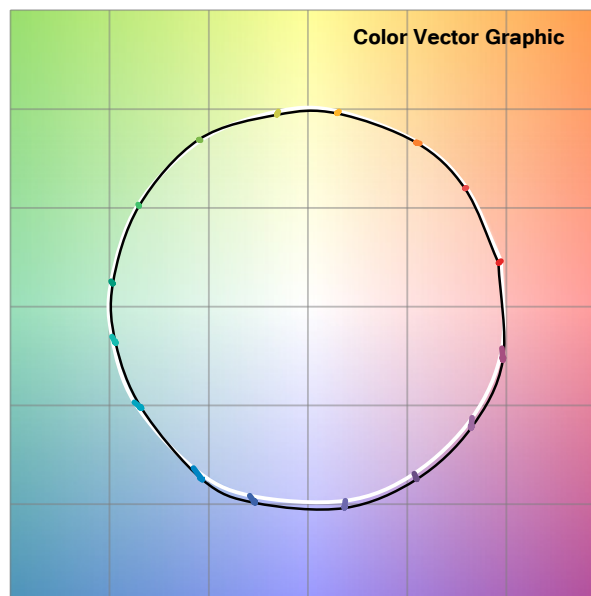
Fixture Type:

■ TM-30 DATA

4000K CCT



Hue Bin	R _f	Graphic shifts (%)	
		Chroma	Hue
1	95	-2%	-1%
2	97	-1%	0%
3	95	-1%	2%
4	95	-1%	1%
5	94	-2%	1%
6	97	1%	1%
7	97	-1%	0%
8	96	-1%	1%
9	94	-1%	4%
10	91	-1%	5%
11	88	2%	7%
12	91	3%	3%
13	94	4%	-1%
14	95	3%	-1%
15	91	2%	-5%
16	90	2%	-6%



Lo Beam

LED TAPE LIGHT

Project Name:

Fixture Type:

■ Please refer to chart below for exact lengths of the Lo Beam Tape Light

Ordered Length		Actual Length
(Foot-Inches)	(Inches)	(Inches)
0'-3"	3	3.9
0'-7"	7	7.8
0'-11"	11	11.7
1'-3"	15	15.6
1'-7"	19	19.5
1'-11"	23	23.4
2'-3"	27	27.3
2'-7"	31	31.2
2'-11"	35	35.1
3'-3"	39	39
3'-6"	42	42.9
3'-10"	46	46.8
4'-2"	50	50.7
4'-6"	54	54.6
4'-10"	58	58.5
5'-2"	62	62.4
5'-6"	66	66.3
5'-10"	70	70.2
6'-2"	74	74.1
6'-6"	78	78
6'-9"	81	81.9
7'-1"	85	85.8
7'-5"	89	89.7
7'-9"	93	93.6
8'-1"	97	97.5
8'-5"	101	101.4
8'-9"	105	105.3
9'-1"	109	109.2
9'-5"	113	113.1
9'-9"	117	117
10'-0"	120	120.9
10'-4"	124	124.8
10'-8"	128	128.7
11'-0"	132	132.6
11'-4"	136	136.5
11'-8"	140	140.4
12'-0"	144	144.3
12'-4"	148	148.2
12'-8"	152	152.1
13'-0"	156	156
13'-3"	159	159.9
13'-7"	163	163.8
13'-11"	167	167.7
14'-3"	171	171.6
14'-7"	175	175.5
14'-11"	179	179.4
15'-3"	183	183.3
15'-7"	187	187.2
15'-11"	191	191.1
16'-3"	195	195
16'-6"	198	198.9
16'-10"	202	202.8
17'-2"	206	206.7
17'-6"	210	210.6

Ordered Length		Actual Length
(Foot-Inches)	(Inches)	(Inches)
17'-10"	214	214.5
18'-2"	218	218.4
18'-6"	222	222.3
18'-10"	226	226.2
19'-2"	230	230.1
19'-6"	234	234
19'-9"	237	237.9
20'-1"	241	241.8
20'-5"	245	245.7
20'-9"	249	249.6
21'-1"	253	253.5
21'-5"	257	257.4
21'-9"	261	261.3
22'-1"	265	265.2
22'-5"	269	269.1
22'-9"	273	273
23'-0"	276	276.9
23'-4"	280	280.8
23'-8"	284	284.7
24'-0"	288	288.6
24'-4"	292	292.5
24'-8"	296	296.4
25'-0"	300	300.3
25'-4"	304	304.2
25'-8"	308	308.1
26'-0"	312	312
26'-3"	315	315.9
26'-7"	319	319.8
26'-11"	323	323.7
27'-3"	327	327.6
27'-7"	331	331.5
27'-11"	335	335.4
28'-3"	339	339.3
28'-7"	343	343.2
28'-11"	347	347.1
29'-3"	351	351
29'-6"	354	354.9
29'-10"	358	358.8
30'-2"	362	362.7
30'-6"	366	366.6
30'-10"	370	370.5
31'-2"	374	374.4
31'-6"	378	378.3
31'-10"	382	382.2
32'-2"	386	386.1
32'-6"	390	390
32'-9"	393	393.9
33'-1"	397	397.8
33'-5"	401	401.7
33'-9"	405	405.6
34'-1"	409	409.5
34'-5"	413	413.4
34'-9"	417	417.3
35'-1"	421	421.2

Ordered Length		Actual Length
(Foot-Inches)	(Inches)	(Inches)
35'-5"	425	425.1
35'-9"	429	429
36'-0"	432	432.9
36'-4"	436	436.8
36'-8"	440	440.7
37'-0"	444	444.6
37'-4"	448	448.5
37'-8"	452	452.4
38'-0"	456	456.3
38'-4"	460	460.2
38'-8"	464	464.1
39'-0"	468	468
39'-3"	471	471.9
39'-7"	475	475.8
39'-11"	479	479.7
40'-3"	483	483.6
40'-7"	487	487.5
40'-11"	491	491.4
41'-3"	495	495.3
41'-7"	499	499.2
41'-11"	503	503.1
42'-3"	507	507
42'-6"	510	510.9
42'-10"	514	514.8
43'-2"	518	518.7
43'-6"	522	522.6
43'-10"	526	526.5
44'-2"	530	530.4
44'-6"	534	534.3
44'-10"	538	538.2
45'-2"	542	542.1
45'-6"	546	546
45'-9"	549	549.9
46'-1"	553	553.8
46'-5"	557	557.7
46'-9"	561	561.6
47'-1"	565	565.5
47'-5"	569	569.4
47'-9"	573	573.3
48'-1"	577	577.2
48'-5"	581	581.1
48'-9"	585	585
49'-0"	588	588.9
49'-4"	592	592.8
49'-8"	596	596.7
50'-0"	600	600.6
50'-4"	604	604.5
50'-8"	608	608.4
51'-0"	612	612.3
51'-4"	616	616.2
51'-8"	620	620.1
52'-0"	624	624
52'-3"	627	627.9
52'-7"	631	631.8