

## Installation Instructions

Please read instructions completely before beginning installation . Save these instructions for future reference.

### IMPORTANT SAFETY INSTRUCTIONS

This product has a polarized plug (one blade is wider than the other) as a feature to reduce the risk of electric shock. This plug will fit in a polarized outlet only one way. If the plug does not fit fully in the outlet, reverse the plug. If it still does not fit, contact a qualified electrician. Never use with on extension cord unless plug can be fully inserted. Do not alter the plug.

### CAUTION

To reduce the risk of fire, electric shock, or injury:

- Disconnect power to the unit prior to installation.
- Use only insulated staples or plastic ties to secure cords.
- Route and secure cords so that they will not be pinched or damaged when the cabinet is pushed to the wall.
- Not intended for recessed installation in ceilings or soffits.
- Not intended for surface installation in enclosed cabinetry.
- The National Electrical Code (NEC) does not permit cords to be concealed where damage to insulation may go unnoticed. To prevent fire, do not run cord where it may be inaccessible for examination.
- Cords should be inspected periodically for wear or damage.
- Do not look directly at the lighted LED.
- Do not operate lamp with a missing or damaged lens.
- The LED lamps inside the fixture are not replaceable.

### MOUNTING

This product is designed to be mounted to the underside of a horizontal surface such as the bottom of a cabinet or shelf.

- Place fixture in desired location . Mounting the fixture with wood screws (included) to horizontal surface. (Figure 1)
- For mounting onto surfaces other than wood, use suitable fasteners (not included).
- Plug in power cord (included).

This fixture can be linked in series by extension cords (included) . Or, the fixture can be linked together by cutting off the port of end cap .(Figure 2)

Do not link more than 500Watts in a series.

### CCT (COLOR TEMPERATURE) CHANGING FUNCTION

Switch off and then switch on the fixture within 2 seconds, to change CCT from 2700K, 3500K to 4000K in a circle. The default CCT is 2700K. It will keep the last setting when the fixture is switched off for over 3 seconds.

Figure 1.

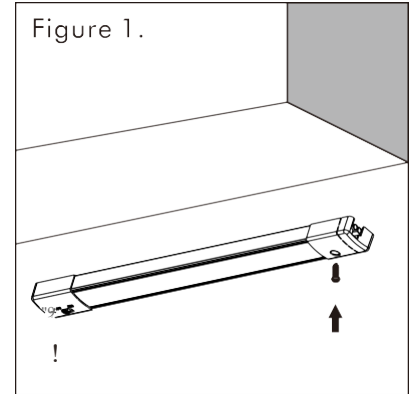
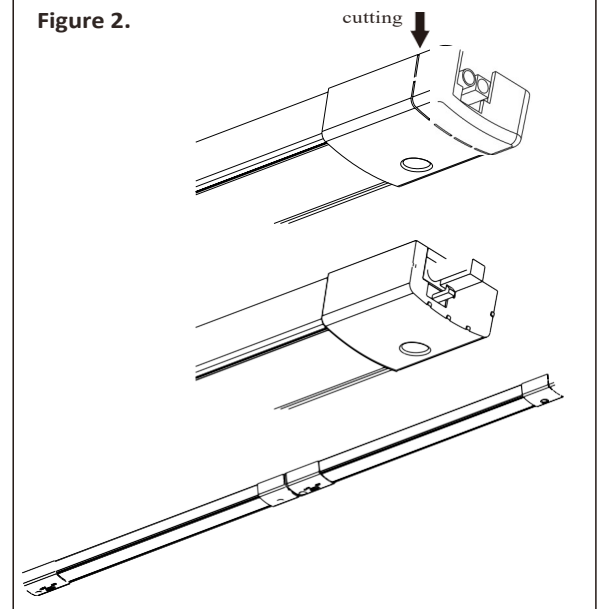


Figure 2.



## Installation Instructions

### IMPORTANT SAFETY INFORMATION:

Please read these instructions carefully before attempting to install this product. It is advisable to keep these instructions in a safe place for further reference.

### WARNING:

These products may represent a possible shock or fire hazard if improperly installed or attached in any way. Products should be installed in accordance with these instructions, current electrical codes and/or the current National Electric Code (NEC). This unit must be grounded.

To avoid electrical shock, disconnect or disable power at the source prior to installation or maintenance. Always consult a qualified electrician.

### Safety Instructions:

1. The LED sleek light is listed c/ETL/us and intended for indoor use in dry locations only. Do not use in the vicinity of standing water or liquids. Do not submerge in water or liquids.
2. Do not use if there is any damage to the unit or to the power cord's insulation. Inspect periodically.
3. Do not route cords or units through walls, doors, windows or any similar part of a building structure.
4. Do not secure unit or its power cord with staples, nails, or any other sharp objects that may damage the cords.
5. Please read and understand these instructions before beginning installation.

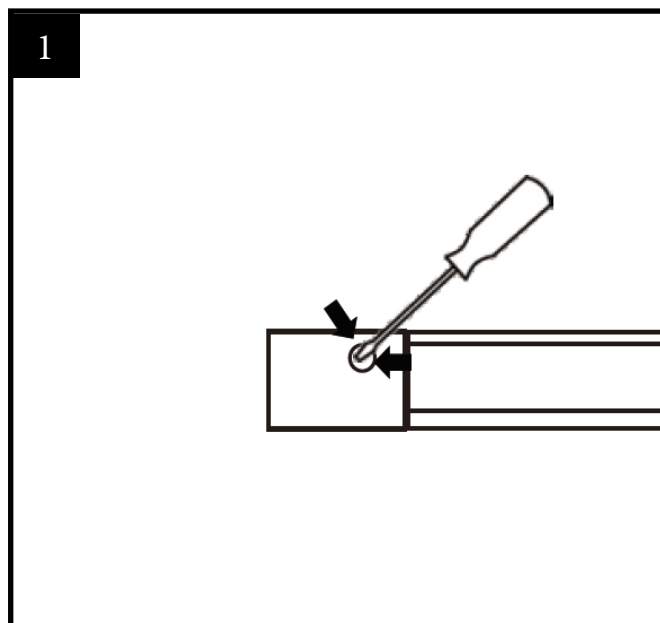
### Maintenance & Care:

1. Ensure that the power is disconnected prior to cleaning.
2. To keep the finish of this product, wipe over with soft cloth periodically
3. Do not use harsh chemical solvents, it may discolour or damage the finish.

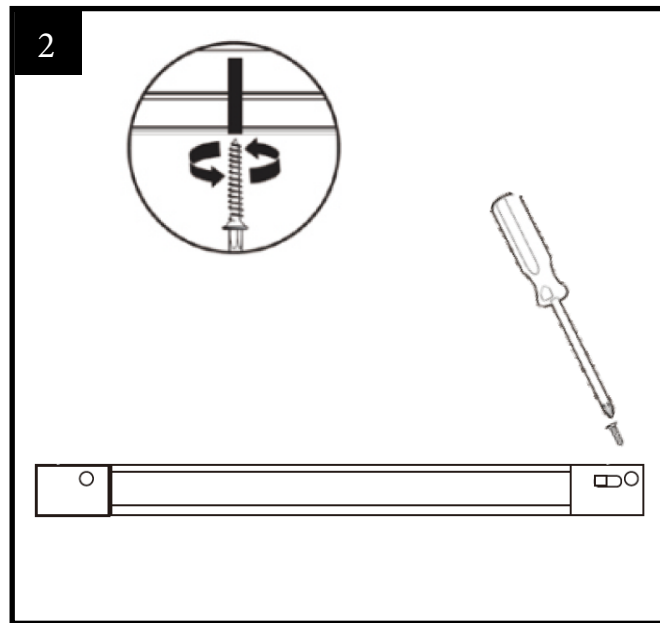
### Preparation for Installation:

1. Disconnect electrical power before installing or servicing any part of this fixture.
2. Place fixture on a clean flat surface.

## ■ INSTALLATION INSTRUCTIONS



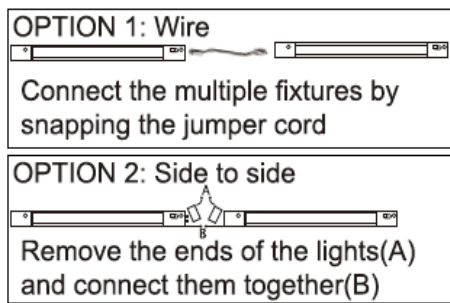
1. Using a flathead screwdriver(not included) pry off the plastic cap that covers the screw hole on the fixture then draw holes with a pen



2. Place the fixture in the desired position and drive fixture mounting screws securely. Complete the mounting by putting back the plastic cap on the hole.

## Installation Instructions

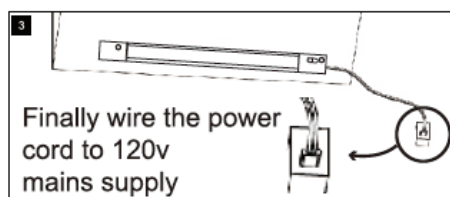
### LINKABLE INSTRUCTIONS



**WARNING:** Make sure the POWER is OFF before connecting any additional fixtures.

**WARNING:** In multiple fixture installations DO NOT electrify fixture group until all electrical connections have been securely mounted.

**WARNING:** DO NOT use jumper cord as a means to turn fixtures on and off.



**WARNING:** DO NOT plug the power cord into the power supply before finishing the installation. Attach the power cord to the "INPUT" receptacle on one end of the fixture. The 2 receptacles are designed to only accept a specific plug.

**NOTE:** Connect cord to fixture by snapping the quick connect end of the cord to the corresponding connector in the end of the fixture marked "IN". The cord will only connect to the "IN" connect< so make sure the right connector is indentified. Do not force the connection, it should snap in easily.

#### FOR THE HARDWIRE BOX OPTION:

Before wiring, make sure to have following accessory parts ready: Cable Connector(LM-MT-LN-CB), Hardwire Box(LMM-LN-HB), and Plug-in Cord(LMMT-LN-PC)

1). Connect the cable connector (LMMT-LN-CB) to the fixture by snapping the quick connect the male end of the cable connecotr to the corresponding female connector at the end of the fixture marked "IN". 2). The female end of the cable connector connects to the male end of hardwire box (LMM-LN-HB). 3). The plug-in cord (LMMT-LN-PC) male end connector snaps to the female end of the hardwire box and plugs into the 120V outlet. The wiring diagram shows below.



### CHOOSE YOUR OWN COLOR:

WARM WHITE    SOFT WHITE    COOL WHITE    slide the switch from open to close to open  
2700K-3300K-4000K    you will see the color change

