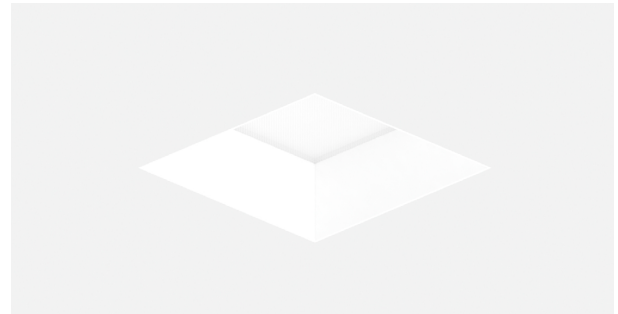


LED 3" IC Fixed Downlight for New Construction

DESCRIPTION

The Novation® IC Fixed Downlight is our entry level dedicated LED downlight that allows a wide variety of trims and accessory options. It is a best-in-class solution for new construction with interchangeable beam spread lenses.

Project Name: _____
 Fixture Type: _____
 Notes: _____



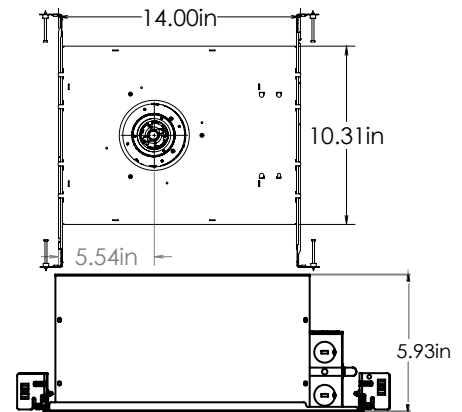
23W Output Performance

Color Temperature	2700K		3000K		3500K		4000K	
Color Rendering Index	90+ CRI	95+ CRI	90+ CRI	95+ CRI	90+ CRI	95+ CRI	90+ CRI	95+ CRI
Source Lumens (lm)	1900	1822	2120	1852	2310	1885	2450	--
Delivered Lumens (lm) (60° Beam Spread)	1340	1275	1500	1295	1630	1410	1730	--
Delivered Lumens (lm) (36° Beam Spread)	1428	1358	1598	1380	1736	1502	1843	--
Delivered Lumens (lm) (24° Beam Spread)	1519	1445	1700	1468	1847	1598	1961	--
Delivered Lumens (lm) (15° Beam Spread)	1504	1431	1684	1454	1830	1583	1942	--

For the 10W and 14W option please use the multiplier chart below to calculate the output performance

Wattage	23W	14W	10W
Multiplier	1	0.61	0.43

DIMENSIONS



ORDERING CODE

EXAMPLE: **NVTN-3-IC-23W-30K-90C-3G-60D-ST-AT-MI**

Product	Watts	Color Temp	Chip Type	CRI	Version	Beam Spread Lens	Driver	Housing	Accessory (Optional)	Optional
NVTN-3-IC 3-7/8" IC Fixed	10W 10 Watts 14W 14 Watts 23W 23 Watts Custom Wattage (Max 23W) ⁽²⁾	27K 2700K 30K 3000K 35K 3500K 40K 4000K 18K30K Dim to Warm (23W-1430 Lm)	Standard (Default) NB Narrow Beam (when using 15D and 24D beam spread lens). Not applicable for 18K30K color temp	90C 90 CRI (Default) 95C 95 CRI	3G 3rd Gen	60D 60° (Default) 36D 36° 24D 24° ⁽¹⁾ 15D 15° ⁽¹⁾	ST2: For wattages between 14 and 23W ST2L For wattages below 14W L2 Lutron Hi-Lume 1% 2-wire, 120V ⁽²⁾ LES Lutron Hi-Lume 1% Ecosystem Soft on Fade to Black, 120-277V ⁽²⁾ <small>Note: All ST2 drivers offer Tri Mode dimming and dim to 1%. 0-10V (120-277V) Triac/ELV (120V only)</small>	AT Airtight (Default) CP Chicago Plenum	CL Clear Lens LI Linear Lens PR Prismatic Lens SA Sanded Lens SO Softening Lens MB Micro Louver Black MA Micro Louver Aluminum	MI Micro Inverter ⁽³⁾ CB C-Channel bars with butterfly mounting brackets for acoustical ceiling. *Nailer bars included.

Note: 1. 15°, 24° optics have a unique LED module not available for field changable. 15°, 24° optics are not available for Dim to Warm.
 2. Lutron drivers available in 10W, 14W, and custom wattage available up to 23W.
 3. Micro inverter requires access above ceiling, otherwise it must be installed remotely.
 4. Driver may currently be out of production.

TRIM ORDERING CODE

Product	Type	Outer Finish	Inner Finish/Shower	Adapter
NVTN-3-TRIM-A Self flanged trims	SQ Square RD Round	WH White BK Black XX Custom Powder Coating (Consult factory for colors)	WH White BK Black SH Shower Trim (For Wet Locations) XX Custom Powder Coating (Consult factory for colors)	NVTN-3-COLR *Trim collar, use for both types SQ and RD in drywall, acoustical, millwork ceiling, spackling not required. Ceiling thickness: 1/2"-1". *Consult factory for thicker ceiling

LED 3" IC Fixed Downlight for New Construction

TRIM ORDERING CODE CONTINUED

Product	Type	Inner Finish	Shower	Adapter
NVTN-3-TRIM-BS Trimless trims	SQ Shallow Square* RD Shallow Round	WH White BK Black XX Custom Powder Coating (Consult factory for colors)	(leave blank) For Dry/Damp Locations SH Shower Trim (for wet locations)	ADPT-SQ-UNV-3G Use for type Square in drywall ceiling ADPT-RD-UNV-3G Use for type Round in drywall ceiling

Example: NVTN-3-TRIM-BS-WH-ADPT-SQ-UNV-3G

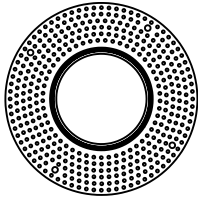
TRIM COMPATIBILITY



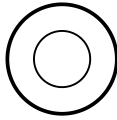
Requires round sheetrock cutout:
4.0625" Diameter



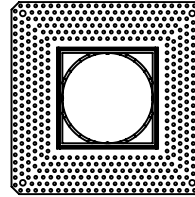
Requires square sheetrock cutout:
4.125"x4.125"



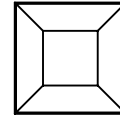
Round Adapter



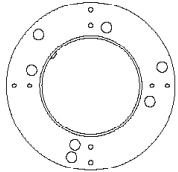
Series B
Round Trim



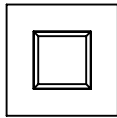
Square Adapter



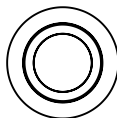
Series B
Square Trim



Round Collar



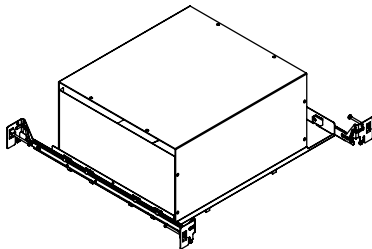
Series A
Square Trim



Series A
Round Trim

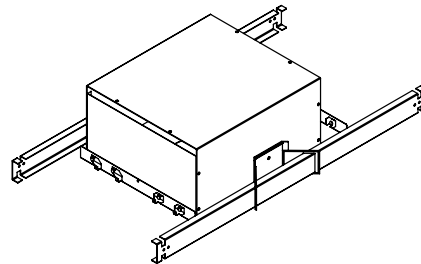
ASSEMBLED VIEW

Nailer bars

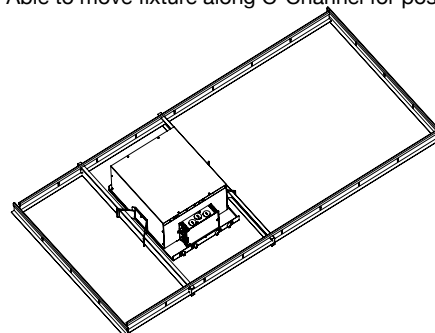


CB Bracket

(C-Channel bars with butterfly mounting brackets for acoustical ceiling)

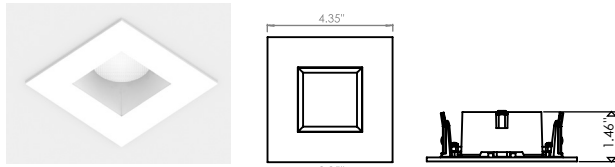


Note: Able to move fixture along C-Channel for position adjustments

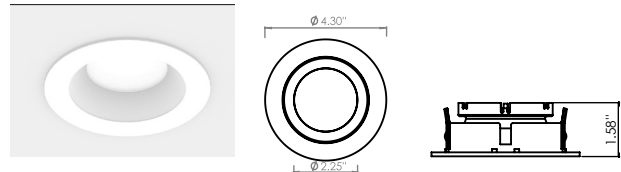


TRIM OPTIONS

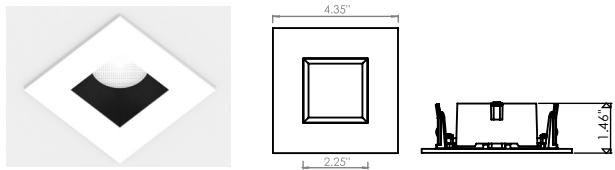
NVTN-3-TRIM-A



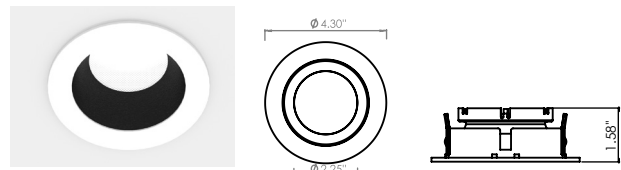
NVTN-3-TRIM-A-SQ-WH-WH



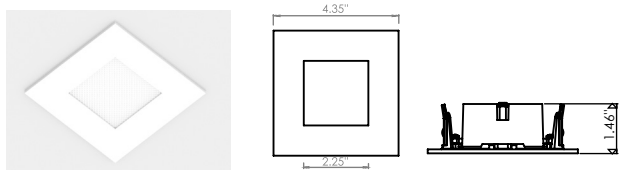
NVTN-3-TRIM-A-RD-WH-WH



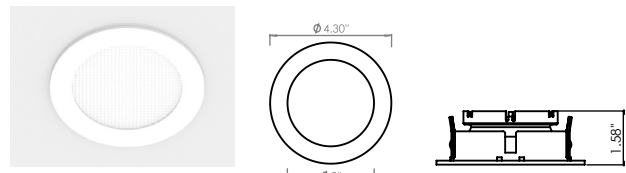
NVTN-3-TRIM-A-SQ-WH-BK



NVTN-3-TRIM-A-RD-WH-BK

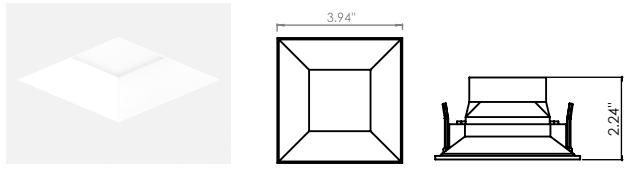


NVTN-3-TRIM-A-SQ-WH-SH

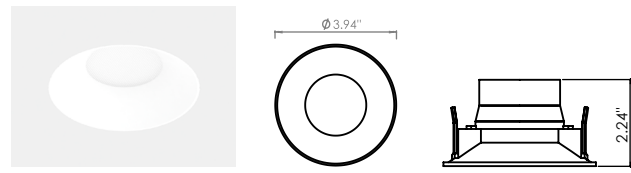


NVTN-3-TRIM-A-RD-WH-SH

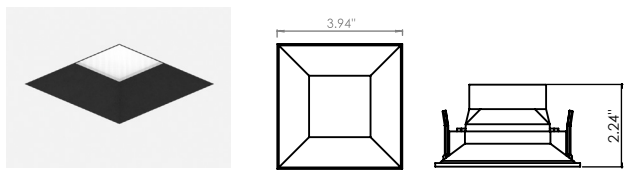
NVTN-3-TRIM-B



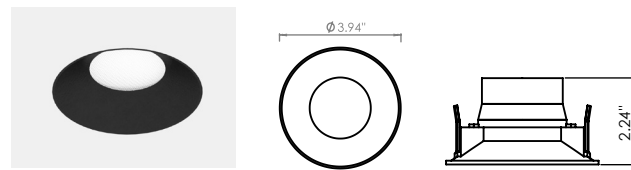
NVTN-3-TRIM-B-SQ-WH



NVTN-3-TRIM-B-RD-WH

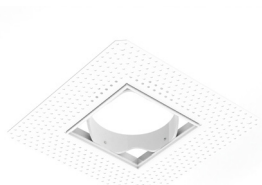


NVTN-3-TRIM-B-SQ-BK



NVTN-3-TRIM-B-RD-BK

TRIM PLASTER ADAPTER



NVTN-ADAP-SQ-3G



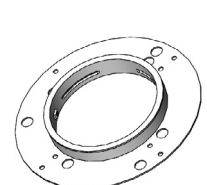
NVTN-ADAP-RD-3G



NVTN-ADAP-ACTL-RD-3G



NVTN-ADAP-ACTL-SQ-3G



NVTN-3-COLR

■ SPECIFICATIONS

LED SYSTEM

- LED ENGINE: CREE: 2700K, 3000K, 3500K, 4000K, LUXTECH: 18K30K dim-to-warm, field-replaceable LED module solderless replacement process
- LUMENS/WATTS: 10W, 15W, 23W, 30W. See lumen output chart on Page 1
- CRI: Minimum 90 color rendering index with an option of 95 CRI
- COLOR CONSISTENCY: 2-step binning LEDs

OPTICS

Multiple beam spread options are provided with fixture.

ELECTRICAL

- DRIVER: Standard ST2 Series driver is Tri Mode and dims to 1%: for 0-10V (120-277V) and for Triac/ELV (120V only)
L2 driver is a 2-Wire LED driver from Lutron that has Hi-lume 1% and provides continuous and flicker-free dimming from 100% to 1%. LES driver is a driver from Lutron that has Hi-lume 1% EcoSystem with Soft-on, Fade-to-Black. It provides continuous and flicker free dimming from 100%-1% and fades smoothly between 0%-1%.
- FEED: Standard 18-gauge/5 conductor single circuit feed. Push-in quick connectors allow ease of driver replacement.
- EMERGENCY: Optional Remote Micro Inverter provides backup power for 90 minutes. Remote emergency test switch included.

MOUNTING

Hanger bars included with housing, fitted to short side of Essential housing, extend 14" to 25" to fit different spacing.
Accommodates to 1/2", 5/8", 3/4", 1.0" ceiling thickness in drywall and acoustical ceiling types.

CONSTRUCTION

- HOUSING: Heavy gauge cold rolled steel with through wire J-box
- HEAT SINK: Precision-cut extruded aluminum heat sink.
- ADJUSTMENT: Field adjustable, tool-less with full 359 degree rotation, tilts up to 40 degrees.
- TRIM: Die-cast aluminum with Solite glass
- TRIM ADAPTER: Die-cast aluminum, spackle flanges are used in sheetrock/mud-in ceiling applications. Acoustical ceiling adapter are available for flanged trim.

FINISH

- HOUSING: Standard powder-coated matte black.
- TRIM: White, Black, Consult factory for custom powder coating finish.

LISTING/WARRANTY

- APPROVALS: UL/C-UL listed, Suitable for dry/damp/wet location. Airtight rated, meets ASTM E283 standards. Chicago Plenum housing available. IC Rated.
- WARRANTY: 5 Year Limited Warranty, Ambient temperatures at fixture location should not exceed 40° C during normal operation.
- LED LIFE > 61,000 hours at 70% lumen maintenance (L70)
- WEIGHT: 4.7lbs
- Can be used to comply with Title 24/JA8 requirements (using ST2 driver and white trim with no accessories. For full list of compatible models please contact factory)

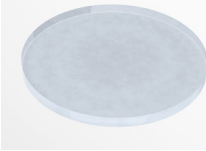


LED 3" IC Fixed Downlight for New Construction

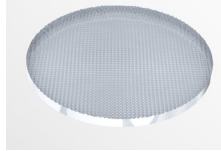
OPTICS ACCESSORY



CL Clear Lens



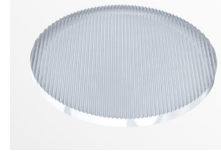
SO Softening Lens



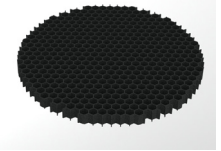
PR Prismatic Lens



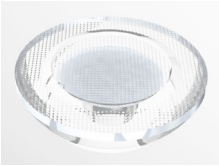
SA Sanded Lens



LI Linear Lens

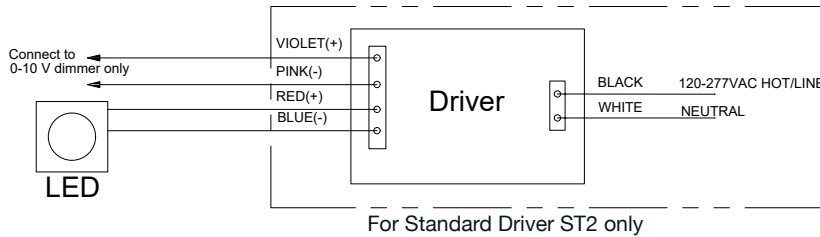


MB/MA Micro-louver
(Black or Aluminum)



XXD Beam Spread

WIRING DIAGRAM



Note: Cap off violet and pink wires individually if 0-10 V dimming is not desired.

DIMMER COMPATIBILITY

Standard Driver ST2					
Dimmer Manufacturer	Product	Part Number	Dimming Range	Qty Fixture Per Control	Dimming Type
120V/277V					
Lutron	Diva	DVTV*/DVSTV/ DVSCSTV	1%-100%	1-14	0-10 V
Lutron	Nova	NFTV*	1%-100%	1-14	0-10 V
120V Only					
Lutron	Skylark	CT-103P(MLV)	1%-100%	1-26	ELV
Lutron	Skylark	SELV-303P/SELV-300P	1%-100%	1-13	ELV

* NVTV/NFTV "DIMMING ONLY" or "USE WITH PowerPack for Dimming+on/off"