

Novation New Construction 3" Non-IC LED Downlight

Installation Instructions

+ Cutout: 3-7/8"

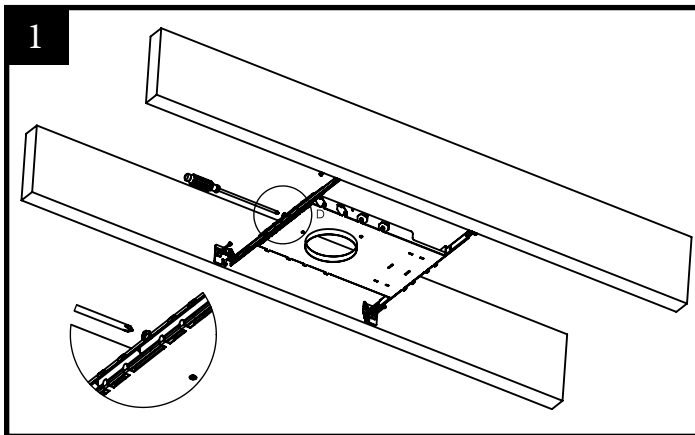
- For your safety, read and understand instructions completely before starting installation

Note: PreciseLED recessed fixtures are designed to meet the latest NEC requirements and are listed in full compliance with UL 1598. Before attempting installation of any recessed lighting fixture, check your local electrical building code. This code sets the wiring standards and installation requirements for your locality and should be understood before starting work. If fixture is to be switch from wall switch or dimmer, make sure black supply wire properly connected to switch or dimmer (follow switch/dimmer instructions). DO NOT connect the white supply wire to the switch.

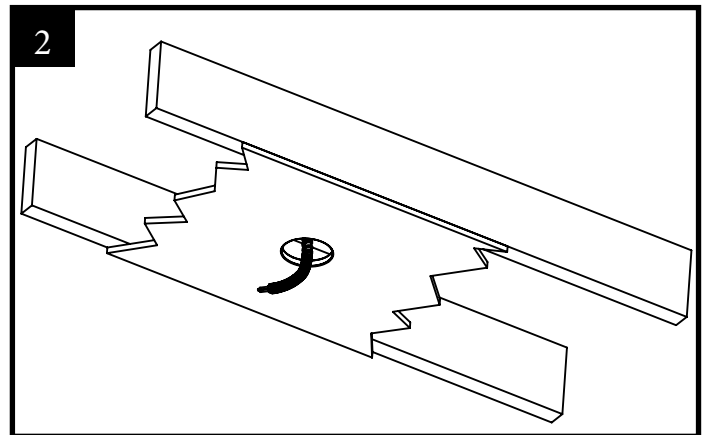
- **WARNING:**

1. Before wiring to power supply, turn off electricity at the fuse or circuit break box.
2. DO NOT cover housings by thermal insulation.
3. Insulation MUST be kept a minimum of 3" from the fixture to comply with National Electrical Code.
4. Always have installation performed by a licensed electrician.

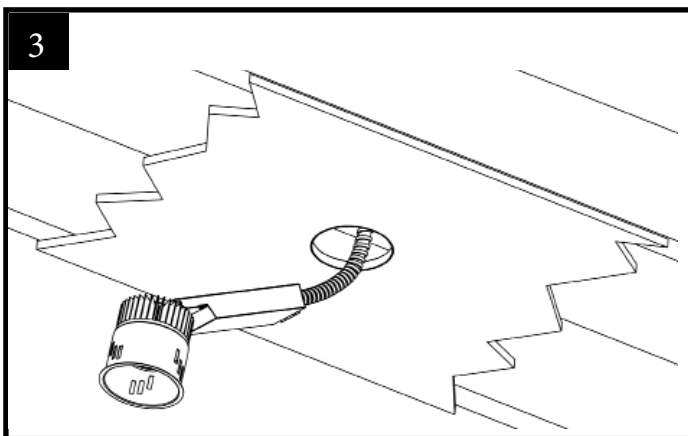
- **FIXTURE INSTALLATION**



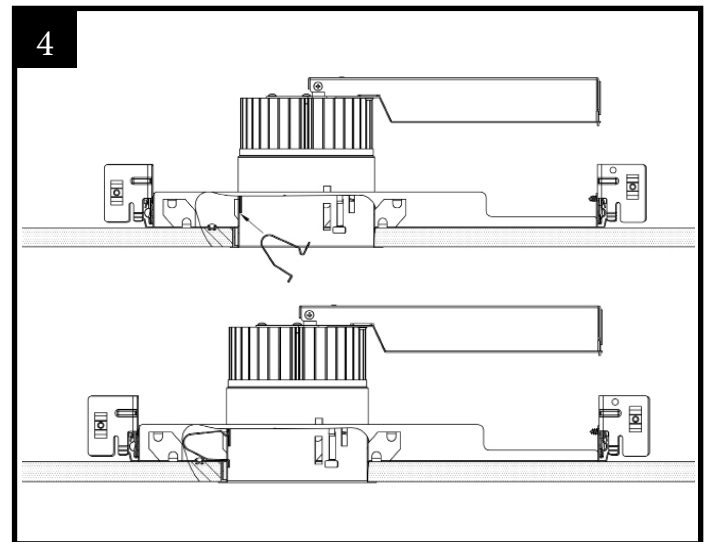
1. Install the housing to the ceiling joists or the drop ceiling T-bars with the adjustable bar hanger bars. Align the bottom of the end plate with the bottom of the ceiling supporting structure. Secure the fixture in desired position with locking-screw. (Note: bar hanger may be shortened to fit 12" framing or smaller by breaking at score lines.)



2. Pull conduit through housing opening and install drywall with 3 7/8" cutout.




3. Install the conduit into 1/2" trade size knock-out in the housing electrical box and connect all power line wires to the driver leads in accordance with NEC and local codes (see page 2 for detail wiring diagram).

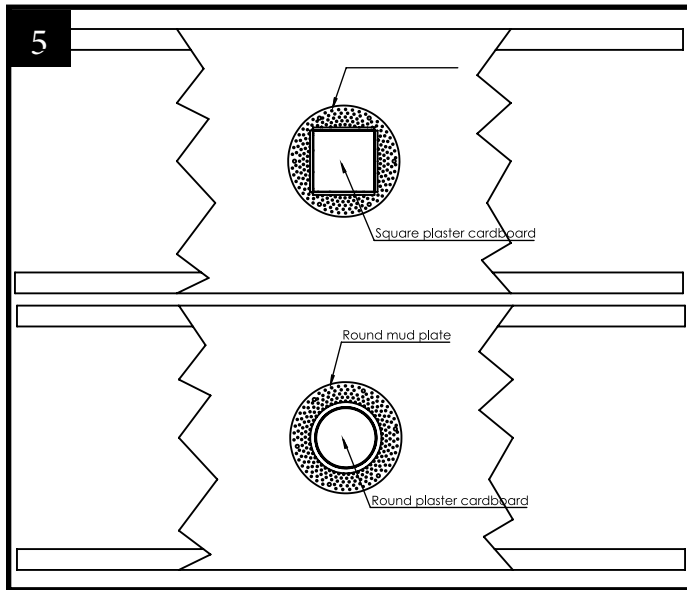


4. There are three groups of three slots on the fixture that account for varying heights of ceilings. Insert the three spring clips into the slots that allow the fixture to snap into the housing plate. Make sure the fixture is snug and has no room for movement.

Novation New Construction 3" Non-IC LED Downlight

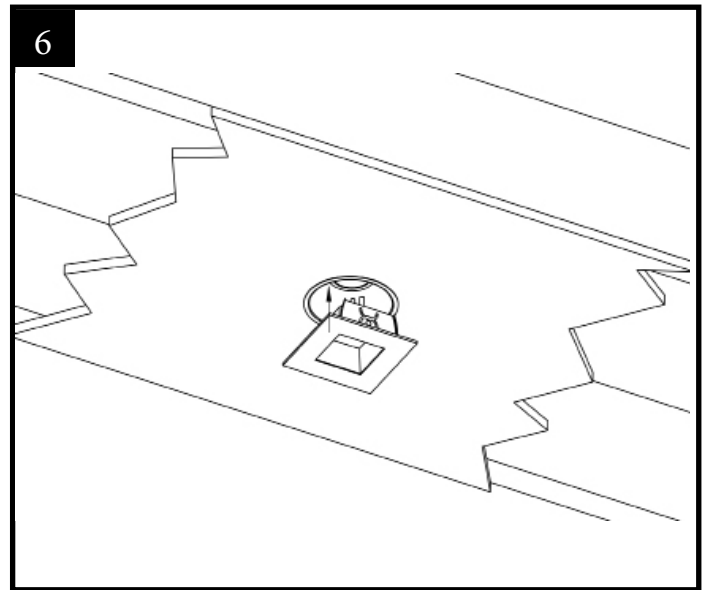
Installation Instructions

 Cutout: 3-7/8"



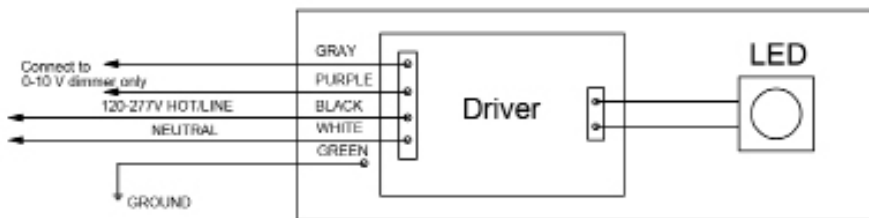
5. Mount the mud plate on the drywall using drywall screws. Properly plaster onto the mud plate and drywall.

* For trimless versions



6. Attach trims to the housing by compressing the spring ends.

■ WIRING INSTRUCTIONS



Note: Cap off purple and gray wires individually if 0-10 v dimming is not desired.

* Compatible with 0-10 V/ forward & reverse phase dimming

