

Installation Instructions

⊕ Cutout: 3-3/4"

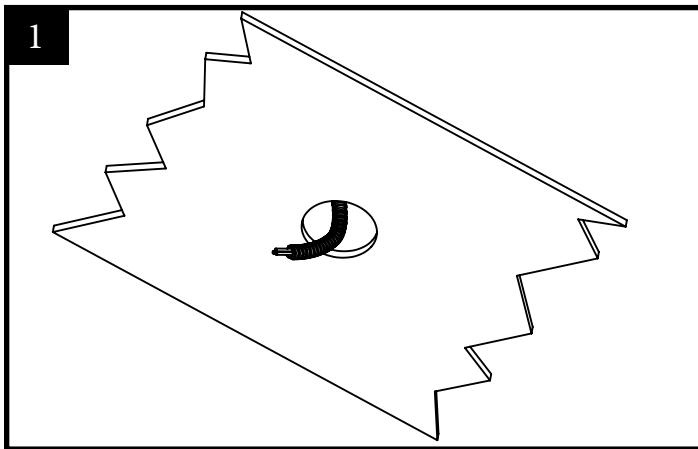
■ For your safety, read and understand instructions completely before starting

Note: PreciseLED recessed fixtures are designed to meet the latest NEC requirements and are listed in full compliance with UL 1598. Before attempting installation of any recessed lighting fixture, check your local electrical building code. This code sets the wiring standards and installation requirements for your locality and should be understood before starting work. If fixture is to be switch from wall switch or dimmer, make sure black supply wire properly connected to switch or dimmer (follow switch/dimmer instructions). DO NOT connect the white supply wire to the switch.

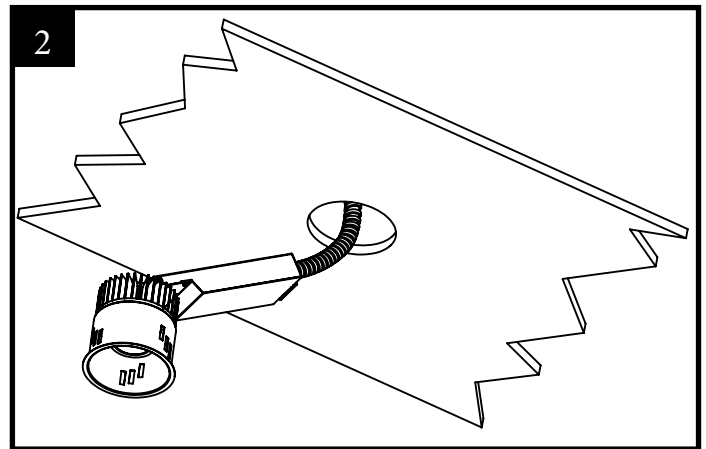
■ WARNING:

1. Before wiring to power supply, turn off electricity at the fuse or circuit break box.
2. DO NOT cover housings by thermal insulation.
3. Insulation MUST be kept a minimum of 3" from the fixture to comply with National Electrical Code.
4. Always have installation performed by a licensed electrician.

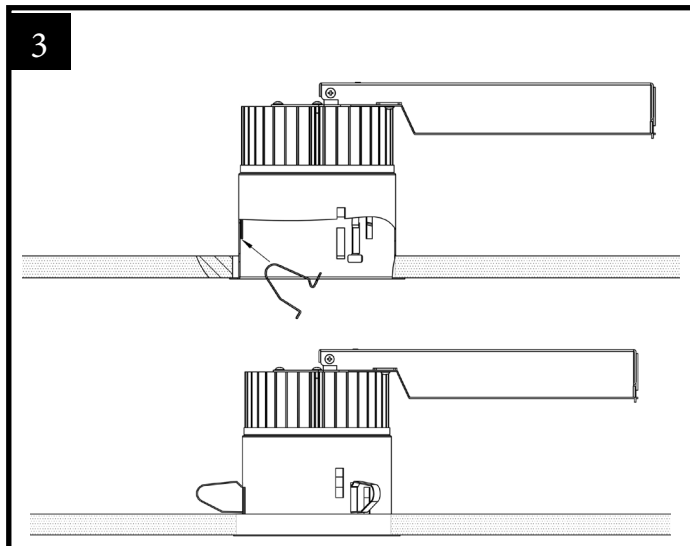
■ FIXTURE INSTALLATION



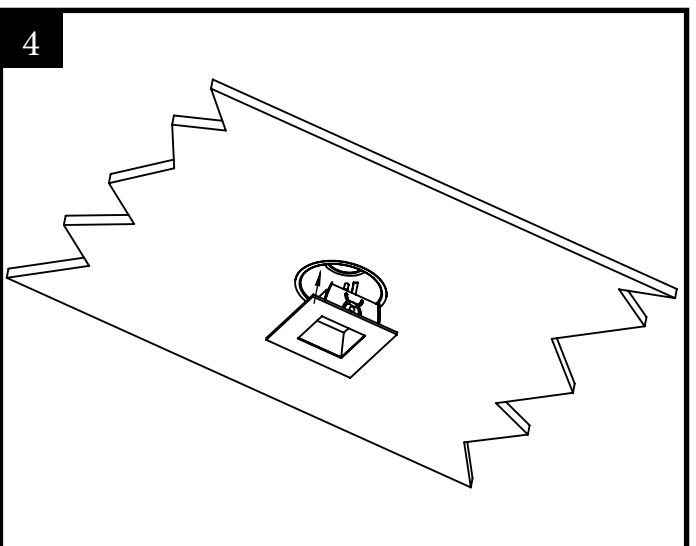
1. Use hole saw to make a 3 3/4" cutout on the ceiling. Pull conduit through cutout.



2. Install the conduit into 1/2" trade size knock-out in the housing electrical box and connect all power line wires to the driver leads in accordance with NEC and local codes (see page 2 for detail wiring diagram).



3. Install the fixture into the ceiling using the three black spring clips.



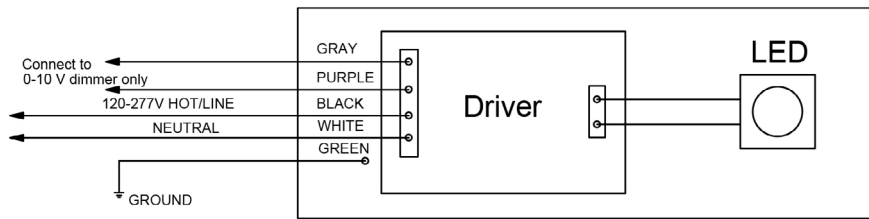
4. Attach trims to the housing by compressing the spring ends.

Novation Remodel 3" Non-IC LED Downlight

Installation Instructions

+ Cutout: 3-3/4"

■ WIRING INSTRUCTIONS



Note: Cap off purple and gray wires individually if 0-10 v dimming is not desired.

* Compatible with 0-10 V/ forward & reverse phase dimming

