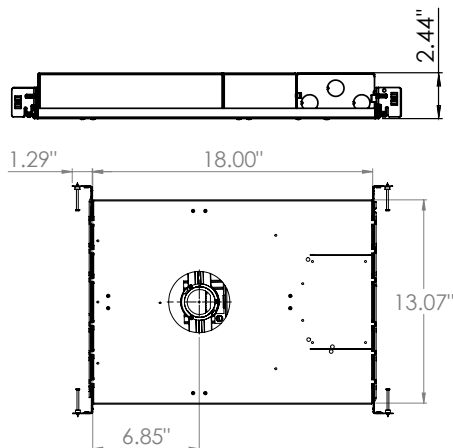


DESCRIPTION

The Novation® Laser downlight is the first architectural laser downlight that includes a white laser light emitter and an adjustable housing that utilizes a heat pipe module that can tilt up to 30° and rotate a full 359°. It is capable of ultra-long beam distances, and narrow beam angles. With beam shaping technology, the beam spread can be electronically controlled to change angle and shape.

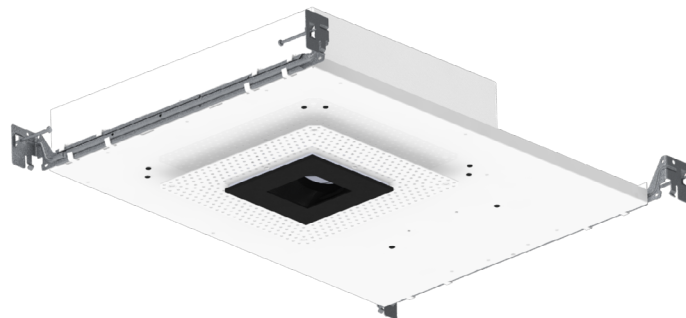
DIMENSIONS



Project Name: _____

Fixture Type: _____

Notes: _____



Color Temp	Watts	Lumens	Color Temp	Watts	Lumens
60K	10	462	35K	10	165
	15	594		15	213
	22	725		22	261

ORDERING CODE

Product	Watts	Color Temp	Chip Type	CRI	Version	Beam Spread Lens	Driver	Housing	Optional
NVTN-LR	10W 10 Watts 15W 15 Watts 22W 20 Watts	35K 3500K 60K 6000K	Standard (Default)	70C - 70 CRI typical	3G 3rd Gen	55D 55 degrees (Default) 10D 10 degrees BS Beam spread shaper	ST Standard Driver	AT Airtight (default) CP Chicago Plenum	MI Micro Invertor CB C-Channel bars for acoustical ceiling. *Nailer bars included

Enter ordering code here:

Example: NVTN-LR-10-60K-70C-3G-50D-ST-AT-MI

TRIM ORDERING CODE

Product	Type	Outer Finish	Inner Finish	Trim Adapter
NVTN-3-TRIM-AS Self flanged trims	SQ Shallow Square RD Shallow Round	WH White BK Black XX Custom Powder Coating (Consult factory for colors)	WH White BK Black SH Shower Trim (for damp locations) XX Custom Powder Coating (Consult factory for colors)	NVTN-3-COLR *Trim collar, use for both types SQ and RD in drywall, acoustical, millwork ceiling, spackling not required. Ceiling thickness: 1/2"-1". * Consult factory for thicker ceiling

Enter ordering code here:

Example: NVTN-3-TRIM-AS-SQ-WH-WH-NVTN-3-COLR

Product	Inner Finish	Trim Adapter
NVTN-3-TRIM-BS Trimless trims	WH White BK Black XX Custom Powder Coating (Consult factory for colors)	ADPT-SQ-UNV-3G For type Square in drywall ceiling ADPT-RD-UNV-3G For type Round in drywall ceiling ADPT-RD-HARD-3G For type Round in stone/wood ceiling

Enter ordering code here:

Example: NVTN-3-TRIM-BS-WH-ADPT-SQ-UNV-3G

TRIM OPTIONS

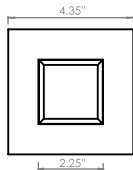


Requires square sheetrock cutout:
4.125" x 4.125"

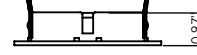
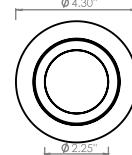
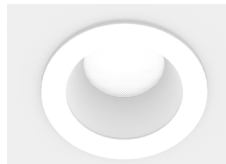


Requires round sheetrock cutout:
4.0625" Diameter

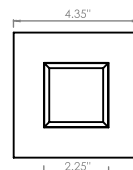
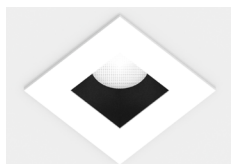
NVTN-3-TRIM-AS



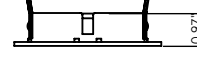
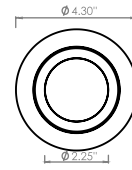
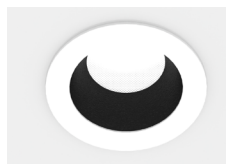
NVTN-3-TRIM-AS-SQ-WH-WH



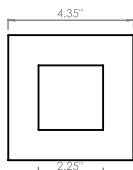
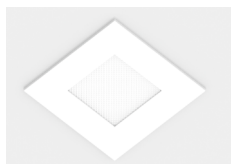
NVTN-3-TRIM-AS-RD-WH-WH



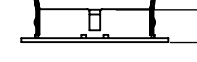
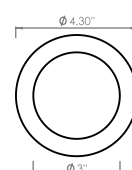
NVTN-3-TRIM-AS-SQ-WH-BK



NVTN-3-TRIM-AS-RD-WH-BK

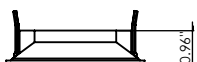
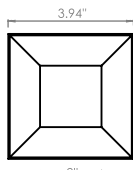


NVTN-3-TRIM-AS-SQ-WH-SH

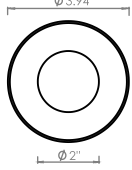


NVTN-3-TRIM-AS-RD-WH-SH

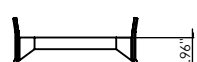
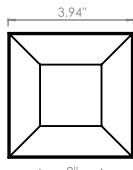
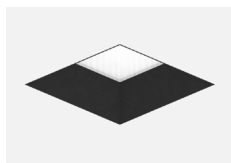
NVTN-3-TRIM-BS



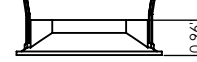
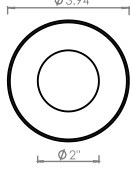
NVTN-3-TRIM-BS-SQ-WH



NVTN-3-TRIM-BS-RD-WH

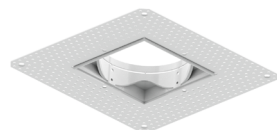


NVTN-3-TRIM-BS-SQ-BK



NVTN-3-TRIM-BS-RD-BK

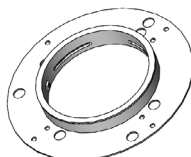
TRIM ADAPTERS



NVTN-ADPT-SQ-UNV-3G



NVTN-ADPT-RD-UNV-3G



NVTN-3-COLR



NVTN-3-ADPT-RD-HARD-3G



■ SPECIFICATIONS

LIGHT SYSTEM

- LASER ENGINE
 - CRI: Typical 70 Color Rendering Index
 - LUMENS/WATTS: 10W, 15 W, 22W, up to 725lm at 22W
 - OPTICS: Default 55° beam spread with 10 degree narrow beam option.
- Beam spread shaper uses technology to create wider beam angles from selected optics.

ELECTRICAL

- STANDARD DRIVER (STB): 120-277VAC, fully dimmable using 0-10V
- FEED: Standard 18-gauge/5 conductor single circuit feed. Push-in quick connectors allow ease of driver replacement.
- EMERGENCY: Remote emergency battery pack provide backup power for 90 minutes. Remote emergency test switch included.

MOUNTING

Residential grade nailer bars included with housing, fitted to short side of IC housing, extend 14" to 25" to fit different joist spacing. C-channel available with butterfly bracket for acoustical ceiling installation. Accommodates to 1/2" , 5/8" , 3/4" , 1.0" ceiling thickness in drywall, millwork and acoustical ceiling types.

CONSTRUCTION

- HOUSING: Heavy gauge cold rolled steel with through wire J-box
- HEAT SINK: Precision-cut extruded aluminum heat sink.
- HEAT PIPE: Six vacuum-sealed copper tubes transfer heat away from the LED to heat sink with 29 aluminum cooling fins
- ADJUSTMENT: Field adjustable, tool-less with full 359 degree rotation, tilt up to 30 degrees.
- TRIM: Die-cast aluminum with Solite glass
- TRIM ADAPTER: Die-cast aluminum, spackle flanges are use in sheet-rock/mud-in ceiling applications. Trim collar are available for flanged trim.
- FINISH: Housing-Standard power-coated matte black. Trim-White, Black, Consult factory for custom power coating finish.

LISTING/WARRANTY

- APPROVALS: Suitable for dry/damp location. Airtight rated for round trim (square trim Airtight pending), meets ASTM E283 standards. Chicago Plenum housing available.
- WARRANTY: 5 Year Limited Warranty, Ambient temperatures at fixture location should not exceed 40° C during normal operation.
- WEIGHT: 12.6lbs

■ LASER MODULE

