

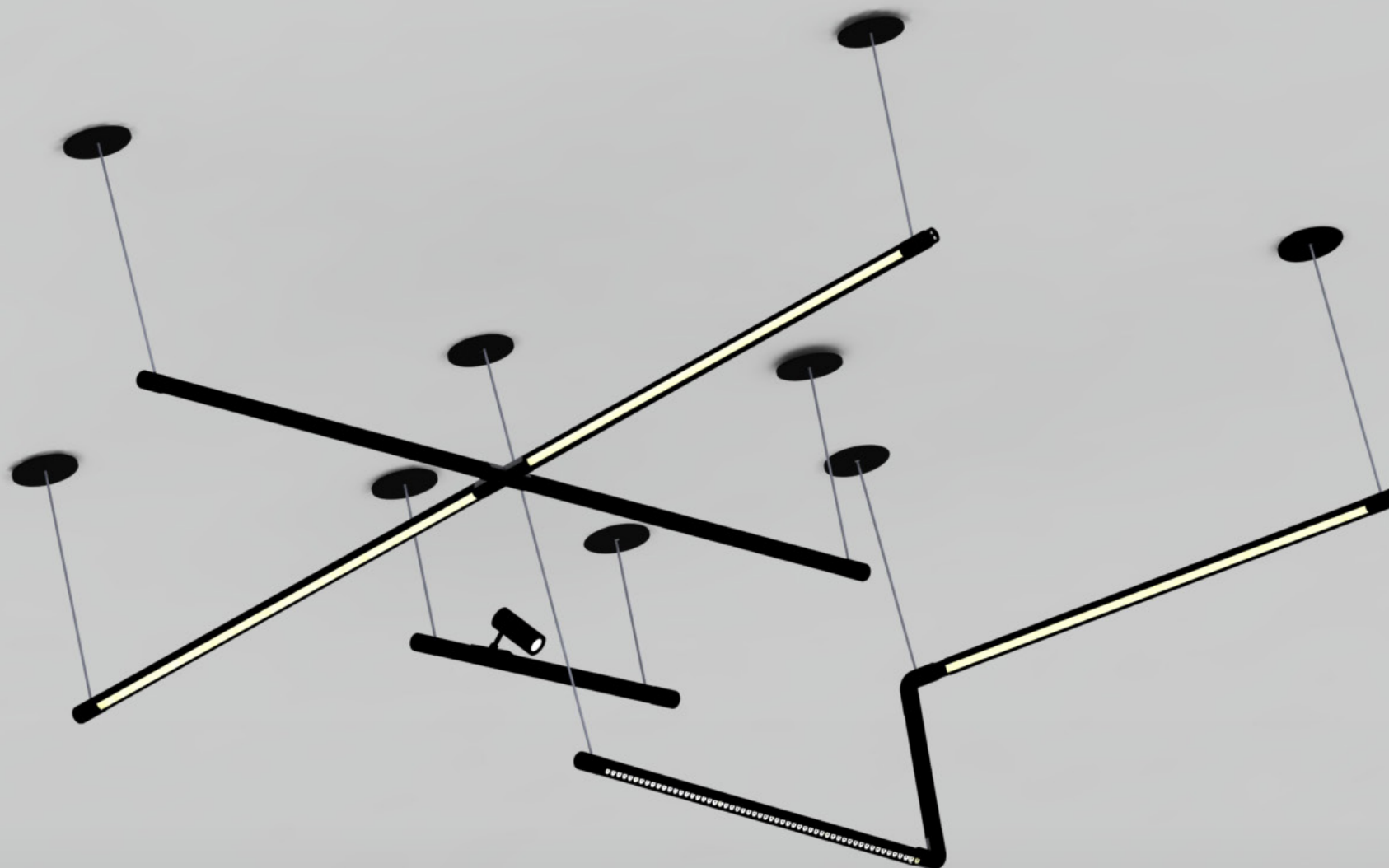


TOOB™

Rotatable LED Lighting Fixture

Design in space. Rotate in seconds.

preciseLED
Precision Through Innovation



What is TOOB™?

A rotatable 3D linear lighting system designed to illuminate ceilings and walls from a single architectural element.

ROTATE,
LOCK,
DONE.

- 359° adjustable
- Field adjustable in seconds
- No reinstallation required

One Fixture. Multiple Outputs.

- Lens Options

DIFFUSED

LOUVRE

TRACK WITH TRACK HEAD

BLANK

360 ILLUMINATION

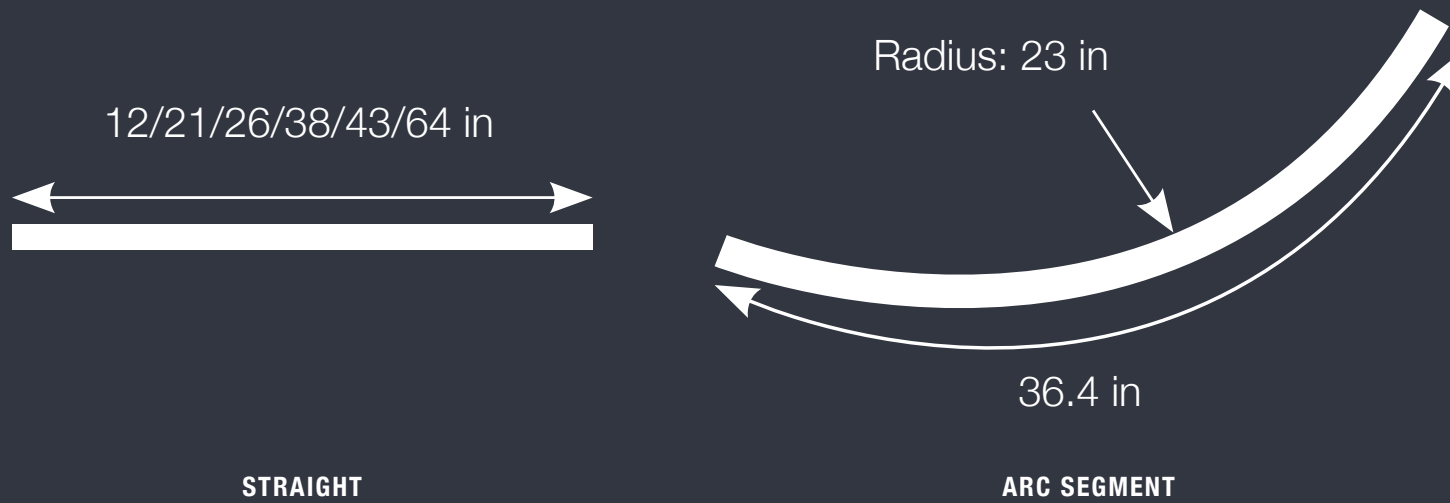


Build Light. Your Way.

TOOB™ adapts to your layout with a modular system of linear segments and connectors. Create structured geometries or simple runs — all from a single cohesive system.

- Modular linear system
- Multiple configuration possibilities
- Seamless connections

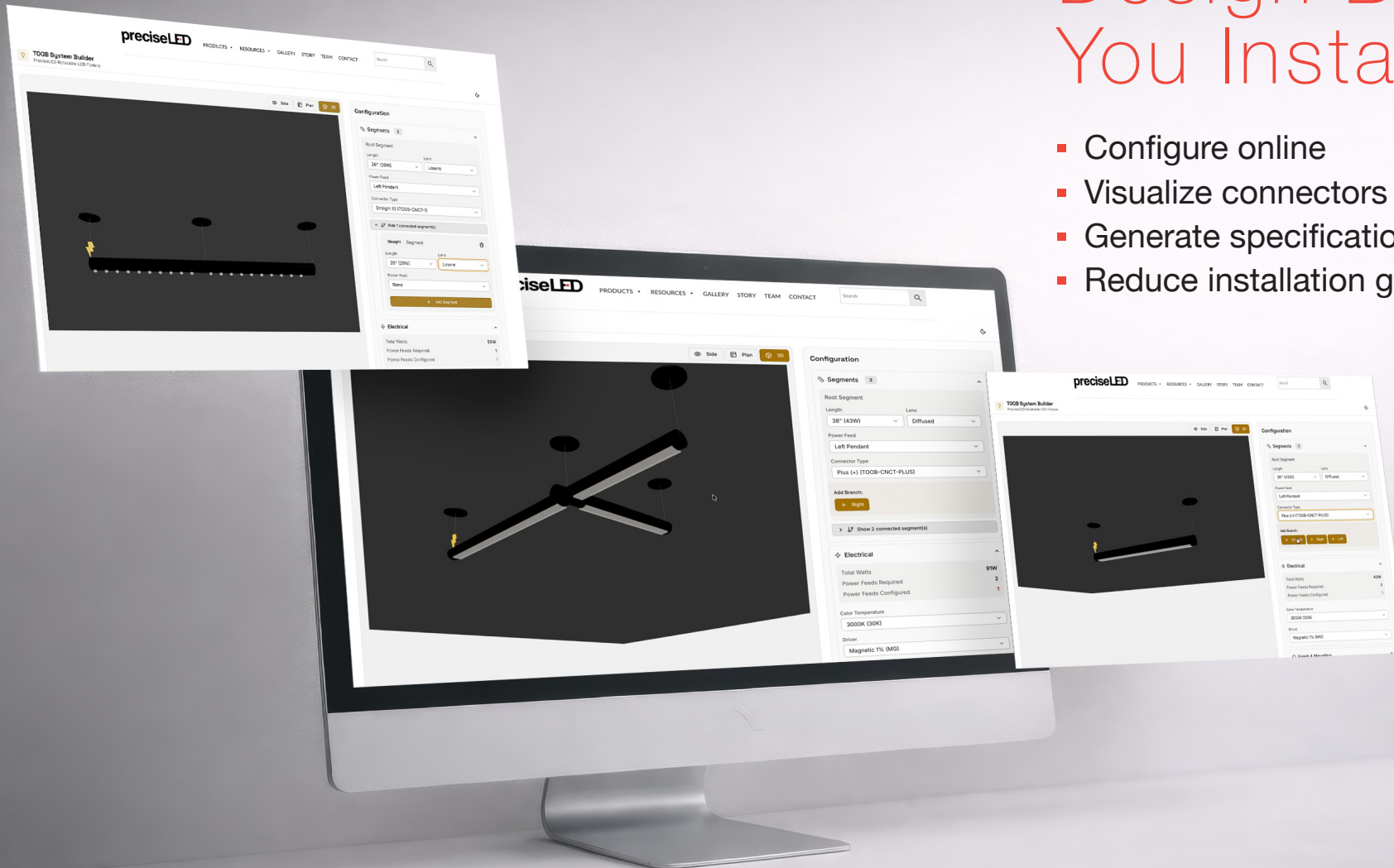
- Types of Channels



TOOB™ 3D BUILDER

Design Before You Install.

- Configure online
- Visualize connectors
- Generate specification
- Reduce installation guesswork



Precision in Every Detail.

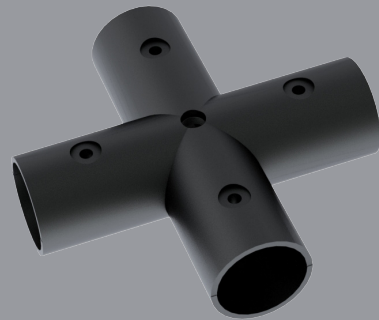
Every connection is engineered for durability, alignment, and clean integration. TOOB™ ensures a seamless look while maintaining structural integrity across configurations.

- Clean, minimal connections
- Durable construction
- Consistent alignment



CONNECTOR SYSTEM

Build in
Any
Direction.



+ CONNECTOR
To connect four TOOB® fixtures



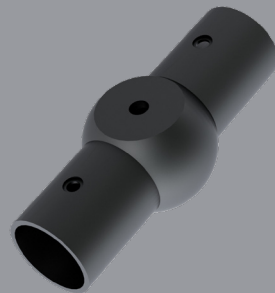
L CONNECTOR
To connect two TOOB® fixtures



T CONNECTOR
To connect three TOOB® fixtures
in a “T” shape.



Y CONNECTOR
To connect three TOOB®
fixtures in a “Y” shape.



AD CONNECTOR
To connect two TOOB®
fixtures at an angle.



I CONNECTOR
To connect two TOOB®
fixtures in a straight line.



END CAP
To be attached to an
open end of the TOOB® fixture.

From Residential to Commercial.



Specifications

14W/ft

24V

90 CRI

881lm/ft

359° adjustable

12–64in lengths

ETL Listed

5 year warranty

preciseLED
Precision Through Innovation