

Versa Channel

TAPE LIGHT CHANNEL

SPECIFICATIONS

Dimension: 0.71"W x 0.36" H
Materials: Aluminum/PC/Steel
Maximum Width of LED Tape: 0.51"

It is compatible with the following tape lights:

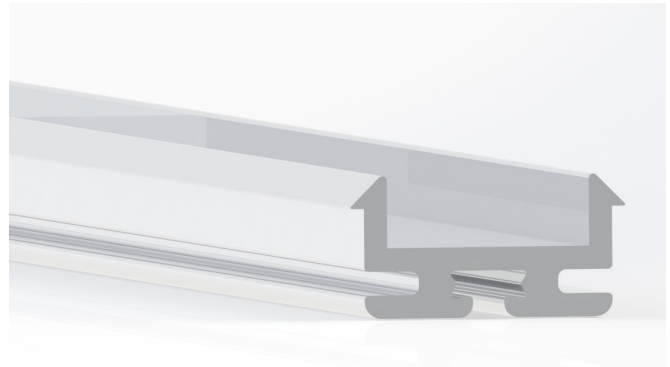
Lo-Beam
Beam
Hi-Beam
Hi-Beam RGB
Hi-Beam RGBW

This channel also features an angled mounting bracket which has 6 different positions incremented at 36 degrees apart from one another.

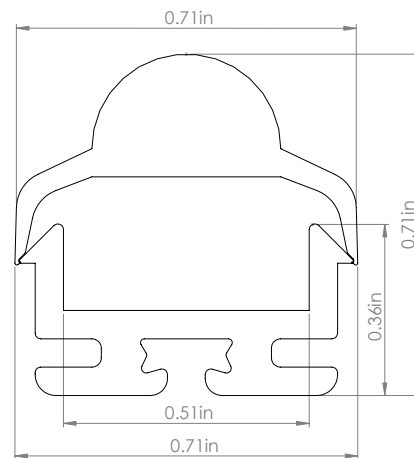
This channel also comes with a variety of lens types which are listed below in the accessories table with their respective beam spread.

Project Name:

Fixture Type:



DIMENSIONS



ORDERING CODE

Example: VRSA-8

Product	Length
VRSA	<input type="checkbox"/> 8 8 Feet XX Length (in <input type="text"/> feet)

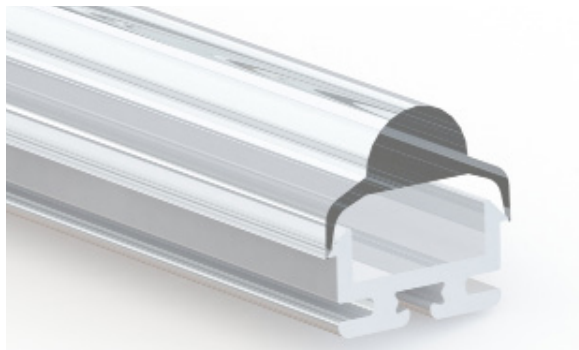
ACCESSORIES:

Accessory	Product	Options
Clear Lens (30 degree beam spread)	VRSA-NRBM	<input type="checkbox"/> 8 8 Feet XX Length (in <input type="text"/> feet)
Diffused Lens (120 degree beam spread)	VRSA-RDDF	<input type="checkbox"/> 8 8 Feet XX Length (in <input type="text"/> feet)
Opal Diffused Lens (120 degree beam spread)	VRSA-RDOP	<input type="checkbox"/> 8 8 Feet XX Length (in <input type="text"/> feet)
End Cap	VRSA-CAPS	
End Cap (With Wire Hole)	VRSA-CAPH	
Standard Mounting Bracket	VRSA-CLIP	
Rotating Mounting Bracket	VRSA-RTCL	

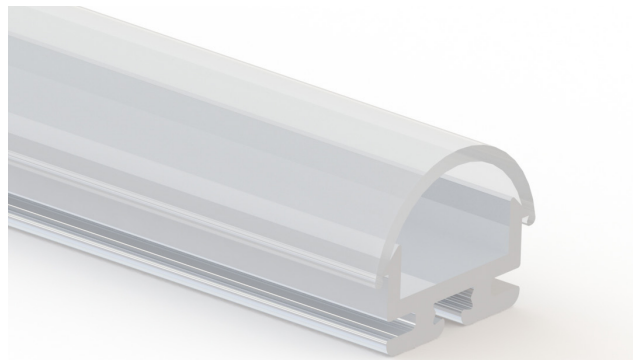
Project Name:

Fixture Type:

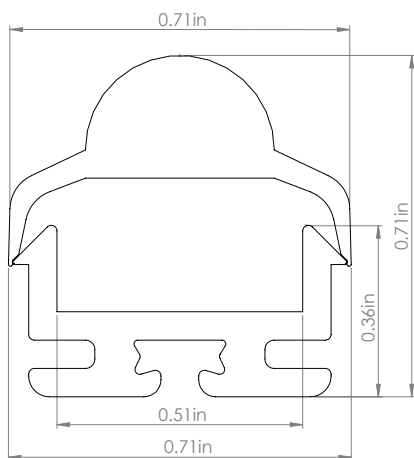
■ Clear Lens - 30 degree beam spread
(VRSA-NRBM)



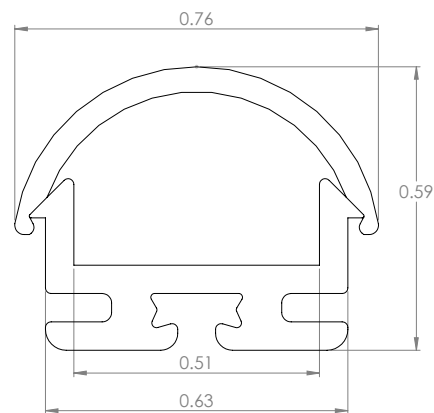
■ Diffused Lens - 120 degree beam spread
(VRSA-RDDF)



■ Clear Lens - 30 degree beam spread
(VRSA-NRBM)



■ Diffused Lens - 120 degree beam spread
(VRSA-RDDF)



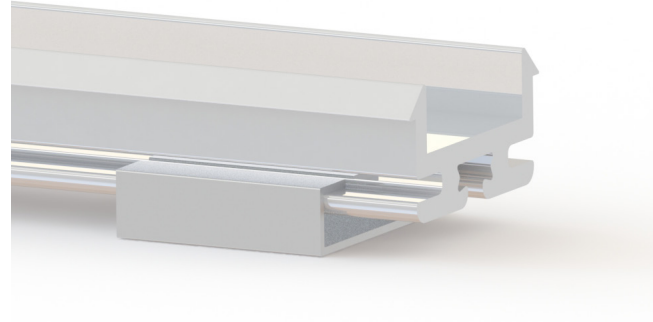
Project Name:

Fixture Type:

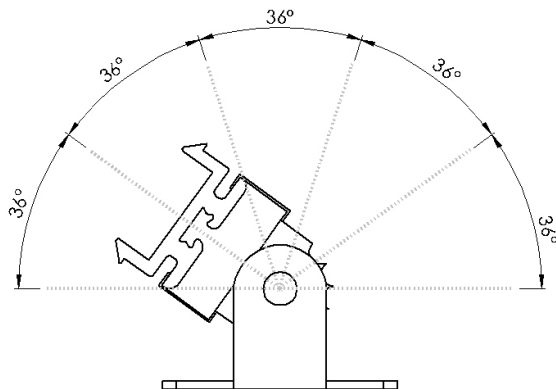
■ Rotating Mounting Bracket
(VRSA-RTCL)



■ Standard Mounting Bracket
(VRSA-CLIP)



■ Rotating Mounting Bracket Angles
(VRSA-RTCL)



■ Standard Mounting Bracket Dimensions
(VRSA-CLIP)

