

# Versa Channel

## TAPE LIGHT CHANNEL

Project Name:

Fixture Type:

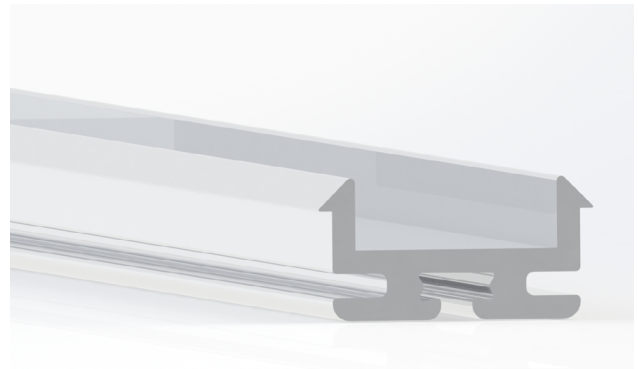
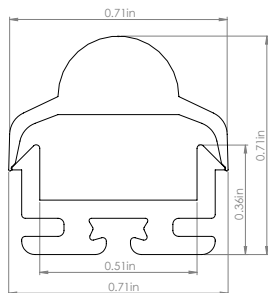
### DESCRIPTION

PreciseLED's aluminum channels are a required companion to our tape light modules. With excellent heat sinking and light diffusion capabilities, our channels can also be custom cut and/or painted to virtually any specification. The Versa channel features an angled mounting bracket which has 6 different positions incremented at 36 degrees apart from one another. This channel also comes with a variety of lens types which are listed below in the accessories table with their respective beam spread.

### SPECIFICATIONS

- Dimension: 0.71"W x 0.36" H
- Materials: Aluminum/PC/Steel
- Maximum Width of LED Tape: 0.51"

### DIMENSIONS

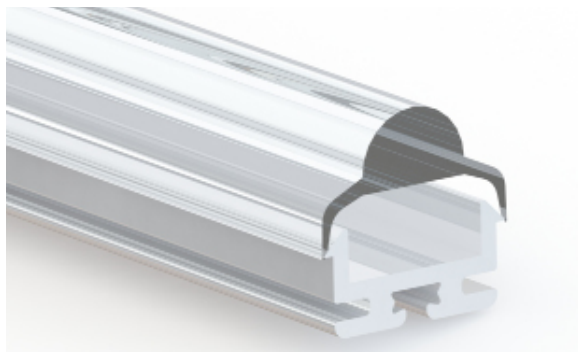


### ORDERING CODE

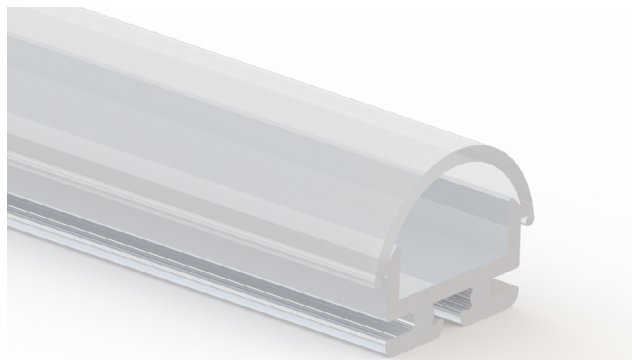
Example: **VRSA-8**

Product	Length	Light Module   Cuttable Length   Watts Per Feet	Lens
<b>VRSA</b>			
<b>VRSA</b>	<b>8</b> 8 Feet <b>XX</b> Custom Length (in feet)	<b>LOBE</b> Low Beam   3.94 inch   1.46 W/ft <b>COBE</b> Cool Beam   2.46 inch   6.2 W/ft <b>BEAM</b> Beam   1.97 inch   2.9 W/ft <b>HI BE</b> Hi-Beam   3.93 inch   4.4 W/ft <b>HI HE</b> Hi-Beam Hi Efficacy   2.46 inch   4.4 W/ft <b>HRGB</b> Hi-Beam RGB   3.94 inch   4.4 W/ft <b>HRGBW</b> Hi-Beam RGBW   2.49 inch   5.9 W/ft	<b>NRBM</b> Clear Lens (30 degree beam spread) <b>RDDF</b> Diffused Lens (120 degree beam spread) <b>RDOP</b> Opal Lens (120 degree beam spread)

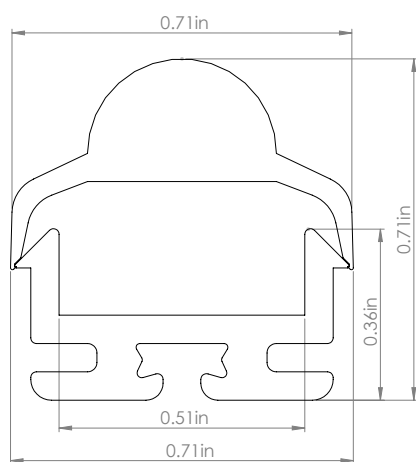
■ Clear Lens - 30 degree beam spread ( VRSA-NRBM )



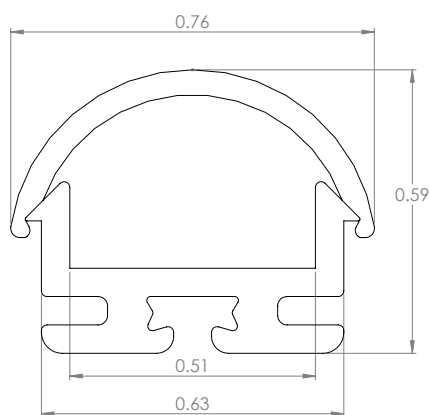
■ Diffused Lens - 120 degree beam spread ( VRSA-RDDF )



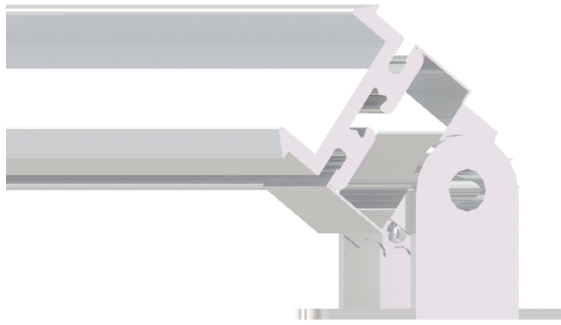
■ Clear Lens - 30 degree beam spread ( VRSA-NRBM )



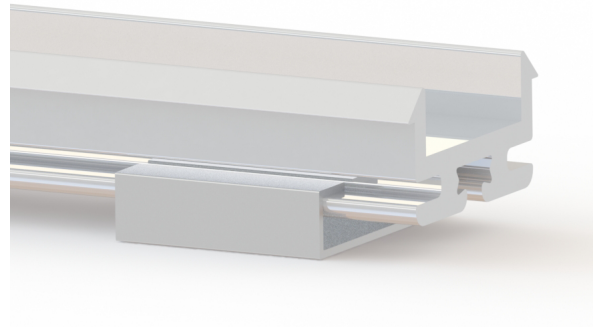
■ Diffused Lens - 120 degree beam spread ( VRSA-RDDF )



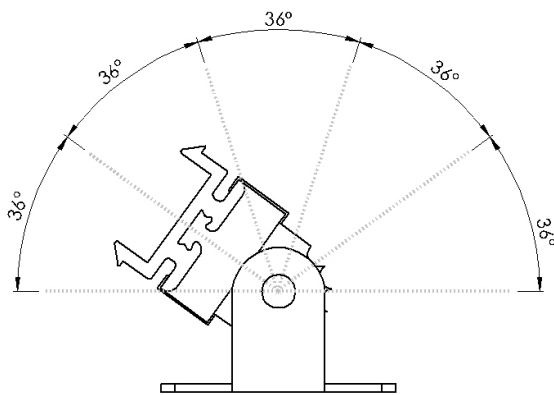
## ■ Rotating Mounting Bracket ( VRSA-RTCL )



## ■ Standard Mounting Bracket ( VRSA-CLIP )



## ■ Rotating Mounting Bracket Angles ( VRSA-RTCL )



## ■ Standard Mounting Bracket Dimensions ( VRSA-CLIP )

