

ZENLITE® LOUVRE-SM

Surface Mount LED Lighting System for New Construction

Project Name:

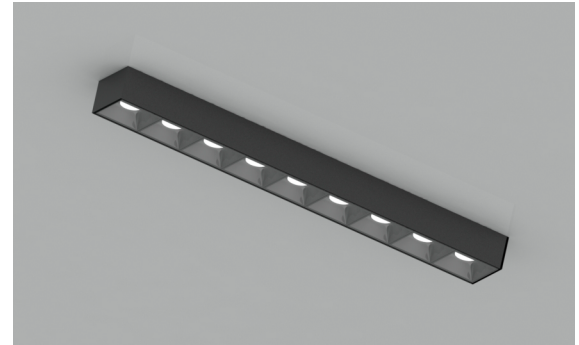
Fixture Type:

DESCRIPTION

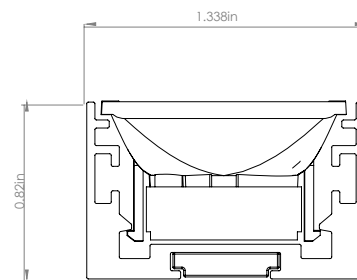
ZENLITE® LOUVRE Surface Mount is an LED Micro Louver Lighting System for Dry-wall Wall applications. Our patent-pending design allows for the easy installation of this versatile fixture, allowing for clean, customizable light in a beautiful, low-glare form. Channel is installed directly to the wall.

SPECIFICATIONS

- Dimension: 1.338" W x .82" H
- Housing: Anodized Aluminum extrusion cut with high precision equipment.
- Louver: Individual precision formed snap-in polycarbonate louvers
- Optics: Multiple beam spread options.
- Ambient Temperature: -4°F ~ +113°F
- Input: 24V DC
- 1% Dimming (MLV/0-10V/Lutron)
- IP Protection: IP20
- Lengths can be specified down to increments of 1.18"
- 50,000 Hours Lamp Life
- CRI ≥ 95
- 5 Year Warranty



DIMENSIONS



LUMEN OUTPUT PERFORMANCE

| Light Module | Lumens/ft |
|--------------|-----------|
| LVCB | 270 |
| LRGW | 150 |
| ZGBM | 250* |

| Color Temp | 27K | 30K | 35K | 40K |
|------------|------|-----|------|------|
| Multiplier | 0.82 | 1 | 1.13 | 1.22 |

* Estimated performance

ORDERING CODE

Example: ZNLT-LOUV-SM-14-LVCB-24V-95C-27K-90-WH-BK-MG

| Product | Length | Light Module Cuttable Length Watts Per Foot | Volt | CRI |
|--------------|-----------------------------------|---|----------|--------------|
| ZNLT-LOUV-SM | | | 24V | 95C |
| ZNLT-LOUV-SM | XX Length In Inches Only in | LVCB Louvre Cool Beam 1.18 inch 5.8 W/ft (Louvre use only) ZGBM Zigbeam Module 1.18 inch 4.4 W/ft (Lens use only) Max length of a Tapelight segment: (Based on Class 2 Circuit Adherence) LVCB- 13.3 Feet ZGBM- 17.5 Feet Note: Lengths can be specified down to 1.18"(30mm). | 24V- 24V | 95C ≥ 95 CRI |

| Color Temperature | Beam Spread | Housing Finish | Trim Color | Drivers |
|--|---|--|---|---|
| 27K 2700K 30K 3000K 35K 3500K 40K 4000K | 10 x 45 degrees 30 degrees 60 degrees 90 degrees DLNS Diffused Lens (for use with ZGBM module only) | WH White (Default) BK Black XX Custom Note: Consult factory for availability of powder coating. | BK Black AZ Clear Alzac Note: Consult factory for more details on multiple colors | MG (1% Magnetic Dimming) ZO (1% 0-10V Dimming) NN Non Dimming L2 Lutron Hi-lume Forward Phase 120V 1% 2-wire (40W Max) L3 Lutron Hi-lume 1% 3-wire/ Ecosystem LP Lutron Hi-lume Premier 0.1% FadeToBlack EcoSytem/3-wire Note: Drivers are remotely mounted |

PRODUCTION OPTIONS (Optional for Lighting designers)

OPTION A

Ship channels in 8ft lengths
(Default for lengths greater than 8 ft)

Note: It will exclude any non-45 degree angles required, which must be cut by PreciseLED factory.

OPTION B

Precut channels to desired lengths
(Default for lengths less than 8ft)

Note: Exact field measurements must be provided, factory does not take responsibility for field measurement errors.

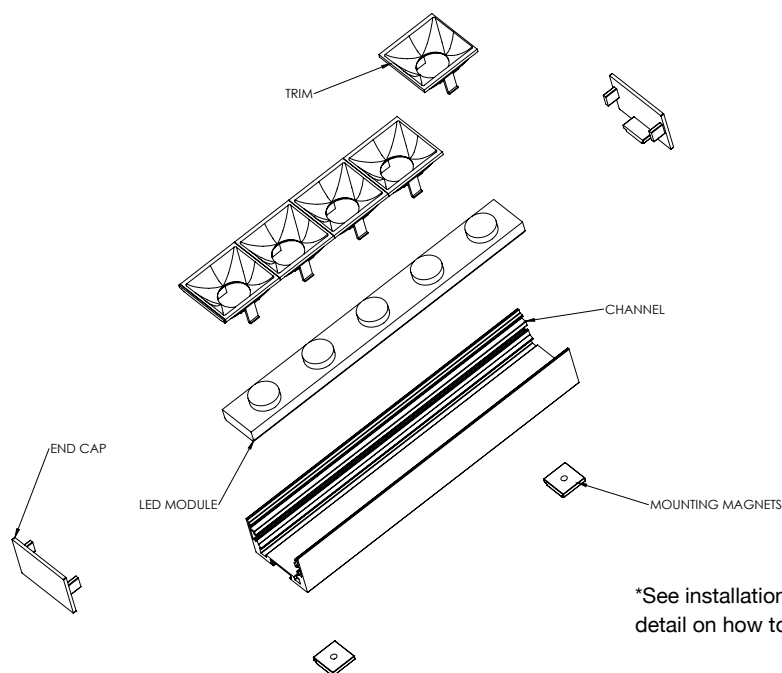
OPTION C

Ship fixture preloaded with LED module

Note: This option is only available for lengths ≤ 8 ft. Exact field measurements must be provided, factory does not take responsibility for field measurement errors.

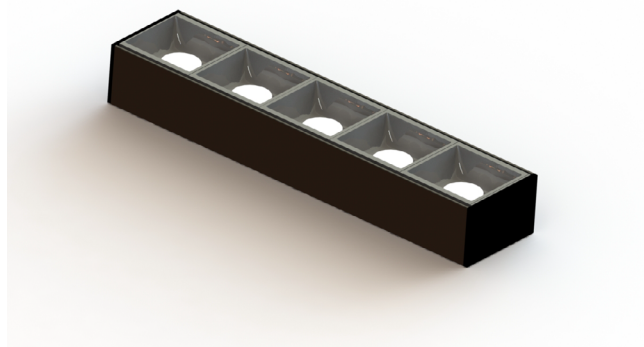
Note: The maximum length of a single channel is 8ft. For runs that are longer than 8ft, multiple 8ft channels need to be join together by means of straight channel connectors. Seamless lenses can be shipped in rolls of lengths up to 40 feet.

TYPICAL INSTALLATION



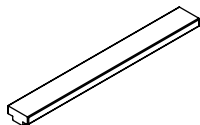
*See installation instructions sheet for further detail on how to install the Louvre product.

ASSEMBLED VIEW



■ ADDITIONAL COMPONENTS

There are standard components that comes along the ZENLITE® Lighting system and are included with the product. They will be added by the factory and do not need to be specified by the customer. These include the following:

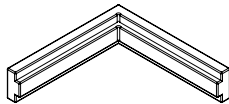


T-shape Connector

Length: 2 inches

Purpose: To connect to straight ZENLITE® Channels

Part #: **ZNLT-CNCT-STRT**

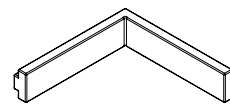


Outside T-shape Connector

Length: 1 x 1 inches

Purpose: To connect to straight ZENLITE® Channels at outside wall corners at 90 deg

Part #: **ZNLT-CNCT-OS90**

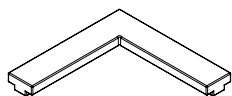


Inside T-shape Connector

Length: 1 x 1 inches

Purpose: To connect to straight ZENLITE® Channels at inside wall corners at 90 deg

Part #: **ZNLT-CNCT-IN90**

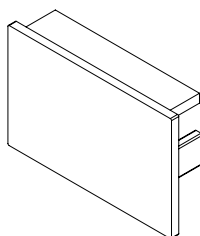


T-Shape Connector - ZIGZAG

Length: 1 x 1 inches

Purpose: To connect to straight ZENLITE® Channels trimmed at 45 Degrees to form a 90 Degree bend

Part #: **ZNLT-CNCT-ZG90**

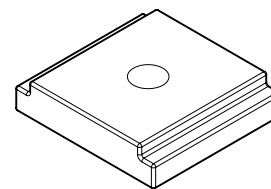


End Cap

Length: 1.34 x 0.82 inches

Purpose: To be attached at the beginning/end of the ZENLITE® Channels.

Part #: **ZNLT-LOUV-ENCP**



Mounting Magnets

Length: 0.5 x 0.5 inches

Purpose: To be attached behind the channels for mounting to the wall.

Part #: **ZNLT-LOUV-MGNT**

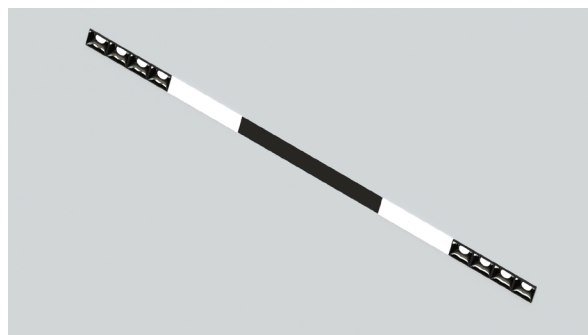
CUSTOM DESIGN

Enter custom design below using the following notation:

T - Trim

P - Plate (unlit)

L - Lens (lit)



Example: **P-L-T**

CUSTOM (leave blank if unneeded)

| Type | Length | Light Module [Watts Per Foot] | Volt | CRI | Color Temp | Beam Spread | Trim/ Lens | Driver |
|--------------|---|---------------------------------------|-----------------|---------------------|--|---|--|---|
| T | | LVCB | 24V | | | | | |
| Trim | XX Length in inches only. Lengths can be specified down to 1.18 inch (30mm). | LVCB Louvre Cool Beam [6 W/ft] | 24V- 24V | 95C ≥ 95 CRI | 27K 2700K 30K 3000K 35K 3500K 40K 4000K | 10X45B degrees 30B degrees 60B degrees 90B degrees | BK Black Trim AZ Clear Alzac Trim | MG (1% Magnetic Dimming) ZO (1% 0-10V Dimming) NN Non Dimming L2 Lutron Hi-lume Forward Phase 120V 1% 2-wire (40W max.) L3 Lutron Hi-lume 1% 3-wire/Eco System LP Lutron Hi-lume Premier 0.1% Fade To Black EcoSystem/3-wire |
| L | | ZGBM | 24V | | | | | |
| Lens | XX Length in inches only. Lengths can be specified down to 1.18 inch (30mm). | ZGBM Zigbeam [4.4 W/ft] | 24V- 24V | 95C ≥ 95 CRI | 27K 2700K 30K 3000K 35K 3500K 40K 4000K | 10X45B degrees 30B degrees 60B degrees 90B degrees | DLNS Diffused Lens | |
| P | | N/A | N/A | N/A | N/A | N/A | | |
| Plate | XX Length in inches only. Lengths can be specified down to 1.18 inch (30mm). | N/A | N/A | N/A | N/A | N/A | ALP Aluminum Plate | |