

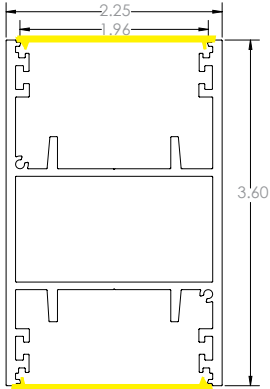
# ZENLITE® ARC2-PM

Pendant Mount Curved LED Lighting System

## Description

ZENLITE® Arc2 Pendant Mount is a curved LED Lighting System that can be specified to any curvature and radius. This fixture can be combined with Arc2 surface and recessed to create one continuous seamless light. ZENLITE® Arc2 Pendant Mount, along with the rest of the ZENLITE® series, allows for complete freedom of light design.

## DIMENSIONS



Project Name:

Fixture Type:



## LUMEN OUTPUT PERFORMANCE

Light Module	Lumens/Ft
ATBU	318

\* The Lumens/ft values are estimated based on a color temperature of 35K

## Lumen Output Multipliers

Color Temp	27K	30K	35K	40K
Multiplier	0.73	.88	1	1.08

## ORDERING CODE

Example: ZNLT-ARC2-PM-AS-157-SC-30R-ATBL-24V-95C-27K-DLNS-WH-5RAW36-MG

Product	Type	Length	Curve Type	Curve Radius	Light Module  Cuttable Length   Watts Per Foot	Voltage
ZNLT-ARC2-PM			SC			24V
ZNLT-ARC2-PM	ST Straight AS Arc segment CIR Full Circle	XX Length  <b>Note:</b> Lengths can be specified down to 0.25 inch.	SC Side curve (Default)  <b>Note:</b> See chart below for details	XXR Radius  <b>Note:</b> Leave blank for straight run. Use multiple sheets for combination of runs.  <b>*There is no minimum or maximum radius. Radii can be set to any length, down to the hundredth of an inch</b>	ATBL Arc Two Beam Low   2.83 in   2 W/ft ATBM Arc Two Beam   2.83 in   4.4 W/ft ATBC Arc Two Beam Cool   2.83 in   6 W/ft ATBU Arc Two Beam Ultra   2.83 in   8 W/ft	24V-24V

CRI	Color Temperature	Lens	Housing Finish	Pendant	Drivers
95C					
95C ≥ 95 CRI	27K 2700K 30K 3000K 35K 3500K 40K 4000K	DLNS Diffused Lens	WH White Powder Coated (Default) BK Black Powder Coated XX Custom Color RAL# *:  * consult factory for availability	5RAW36-8PD Feed/Non Feed 5" (White) Round Canopy with 36 inches Aircraft Cable (Default) 5RAB36-8PD Feed/Non Feed 5" (Black) Round Canopy with 36 inches Aircraft Cable Custom Enter part# from Table 1  <b>Note:</b> Leadwire for tapelight will be the same length as the aircraft cable	MG (1% Magnetic Dimming) ZO (1% 0-10V Dimming) NN Non Dimming L3 Lutron Hi-lume 1% 3-wire/ EcoSystem (40W max.) LP Lutron Hi-lume Premier 0.1% FadeToBlack EcoSystem/3-wire  Drivers are remotely mounted

AIR CRAFT CABLE AND STEM MOUNTING OPTION (TABLE 1)

Type	Canopy	Hardware	Color	Length
<b>F</b> Feed Kit <b>N</b> Non-Feed Kit <b>PP</b> Power Suspension Kit (positive) <b>PN</b> Power Suspension Kit (negative)	<b>5R</b> 5" Round ( <b>Default</b> ) <b>5S</b> 5" Square <b>8R</b> 8" Round <b>8RS</b> 8" Round w/side feed  <b>Note:</b> other sizes available, consult factory for details. ZO driver fits in 8R/8RS canopy only	<b>A</b> Air Craft Cable ( <b>Default</b> ) <b>S</b> Stem <b>AP</b> Air Craft Puck Cable  <b>Note:</b> Stem option is not available for Power Suspension Kit	<b>W</b> White ( <b>Default</b> ) <b>B</b> Black <b>X</b> Custom RAL#:	<b>18</b> 18 Inch <b>36</b> 36 Inch ( <b>Default</b> ) <b>48</b> 48 Inch <b>72</b> 72 Inch <b>XX</b> Custom Length:  <b>Standard Length:</b> Air Craft Cable: 36" Stem: 18"

TYPES OF ZENLITE ARC CHANNELS:

**Full Circle**  
Order info: Radius  
Sample order code:  
ZNLT-ARC2-PM-CIR-30R-ACBM-24V-95C-27K-MG

**Straight**  
Order info: Length  
Sample order code:  
ZNLT-ARC2-PM-ST-36-ACBM-24V-95C-27K-MG

**Arc Segment**  
Order info: Radius and Length/Degree  
Sample order code:  
ZNLT-ARC2-PM-AS-45"-51.5R-ACBM-24V-95C-27K-MG

Arcs with different radii are separated into different segments. Sample order code:

1

2

1 ZNLT-ARC2-PM-AS-16-20R-ACBM-24V-95C-27K-MG  
2 ZNLT-ARC2-PM-AS-16-28R-ACBM-24V-95C-27K-MG

CURVE TYPE CHART

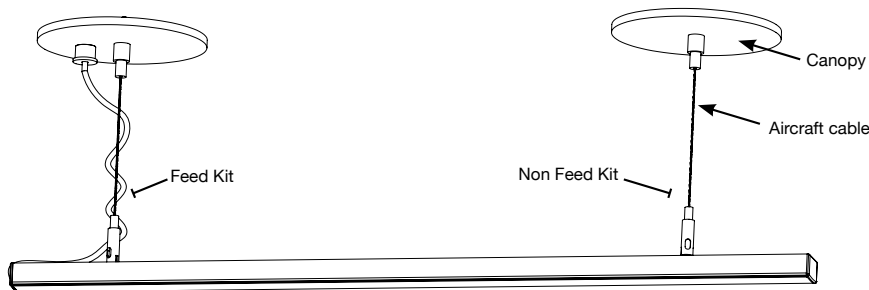
Side Curve (Default)

Light Source

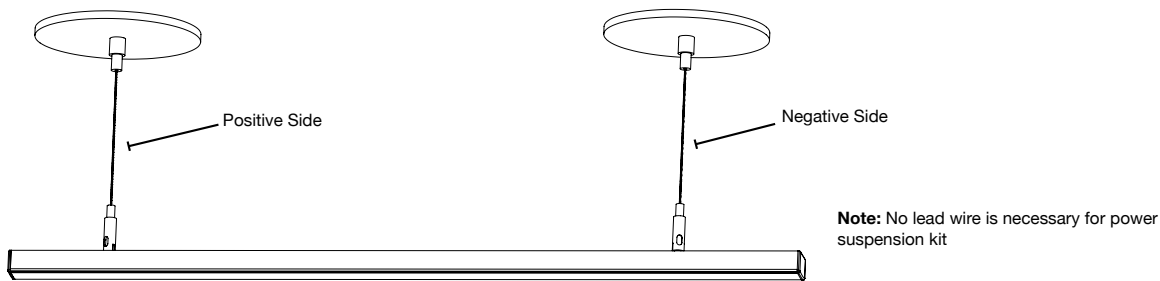
Note: Bending on both axis (helix or spiral) curves are not available

## PENDANT TYPES

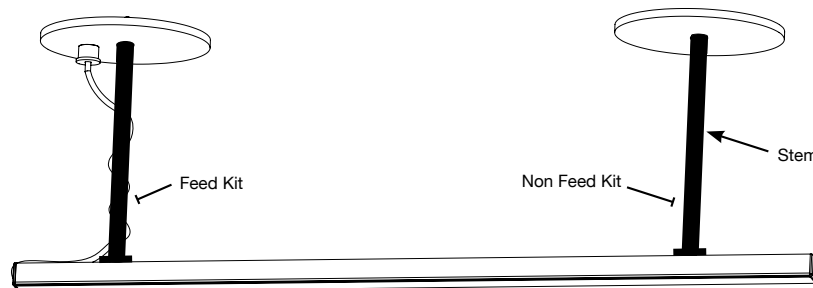
### Feed/Non Feed Kit Assembled



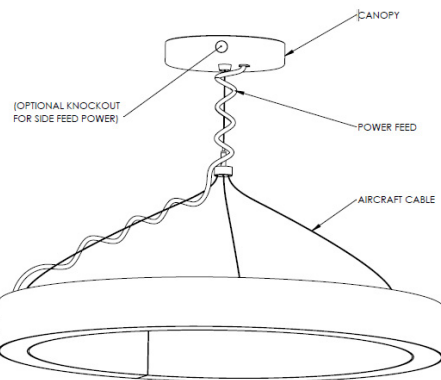
### Power Suspension Kit Assembled



### Feed/Non Feed Kit Assembled (with Stem)



### Feed Kit Assembled w/Cable Puck - F-8RS-AP



## SPECIFICATIONS

### LED SYSTEM

The LED system consists of four different light modules to choose from; ATBL, ATBM, ATBC, and ATBU which are also dimmable using a dimmable driver. They display a clean line of light at the surface of the lens. The light modules are available in four different color temperatures of 2700K, 3000K, 3500K, and 4000K. They have a minimum 95CRI (color rendering index) and have gone through a 3-step binning process.

### OPTICS

Silicone lens with UV surface, continuous run up to 40ft.

### ELECTRICAL

There are six available drivers to choose from. All LED drivers are mounted remotely and have 120-277VAC input.

**MG driver** is a forward phase, 1% magnetic low voltage (dims down to 1%) dimming and flicker free.

**ZO driver** consists of 1% 0-10V dimming, flicker free, and is IP65 rated for both indoor and outdoor use.

**NN driver** is a non dimming, flicker free driver that is IP65 rated for both indoor and outdoor use.

**L3 driver** is a 3-Wire driver from Lutron that has Hi-lume 1% EcoSystem and provides continuous and flicker free dimming from 100%-1%

**LP driver** is a 3-Wire driver from Lutron that has Hi-lume Premier 0.1% FadeToBlack EcoSystem and provides continuous and flicker free dimming down to 0.1% when paired with EcoSystem Lutron controllers.

- FEED: 18" of wire provided with connection to a longer wire inside the beginning module.
- EMERGENCY (Optional): Remote emergency battery pack provides backup power for 90 minutes. Remote emergency test switch included.

### MOUNTING\*

- PENDANT: White round canopy with an aircraft cable of 36 inches is provided by default with the additional choices of black or custom colors. Air craft length can be 18, 36, 48, or 72 inches with the option for custom lengths.
- Mounting brackets are provided to be attached to the pendant kit; allowing for the pendant to be mounted directly into the ceiling. This design is versatile for any location and easily moved.

\*\*Consult factory for connection with recessed version

### CONSTRUCTION

- DIMENSIONS: 2.25" W x 3.60" H
- HOUSING: Anodized aluminum extrusion cut with high precision equipment with up to 98% reflectivity on the inside.
- HOUSING FINISH: Powder coated white by default; with black available, and the option for custom colors. This provides the channel with a smooth finish and a defined color.

### LISTING/WARRANTY

- WARRANTY: 5 year limited warranty, ambient temperatures at fixture location should not exceed 40°C during normal operation.
- IP Protection: IP20
- CRI ≥ 95
- 50,000 hours lamp life
- US & International Patents Pending

## ■ PRODUCTION OPTIONS (Optional for Lighting designers)

### OPTION A

Ship channels and flanges in 8ft lengths  
(Default for lengths greater than 8 ft)

Note: It will exclude any non-45 degree angles required, which must be cut by PreciseLED factory.

### OPTION B

Precut channels and flanges to desired lengths  
(Default for lengths less than 8ft)

Note: Exact field measurements must be provided, factory does not take responsibility for field measurement errors.

### OPTION C

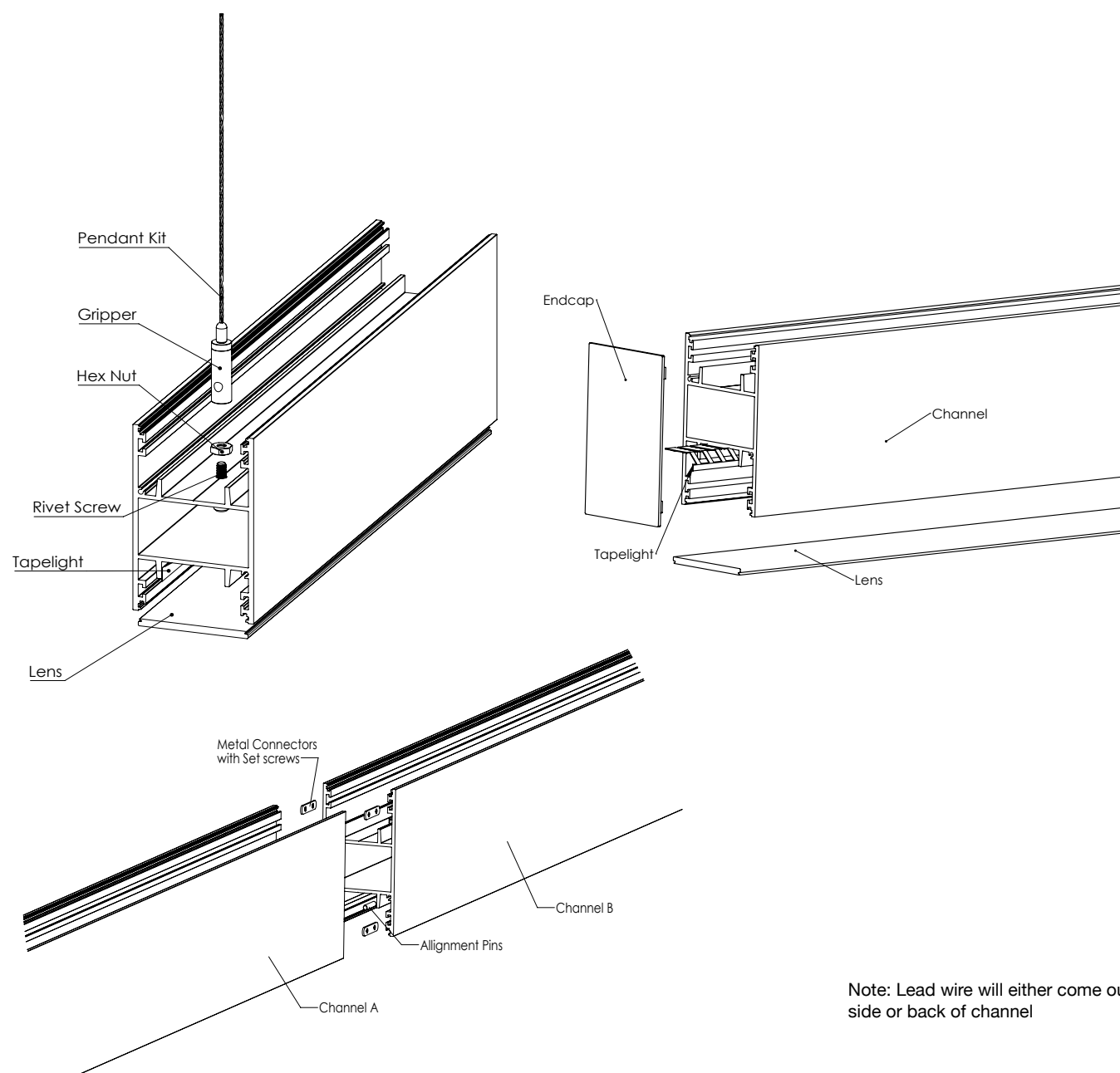
Ship fixture preloaded with LED module

Note: This option is only available for lengths  $\leq 8$  ft. Exact field measurements must be provided, factory does not take responsibility for field measurement errors.

Note: The maximum length of a single channel is 8ft. For runs that are longer than 8ft, multiple 8ft channels need to be join together by means of straight channel connectors. Seamless lenses can be shipped in rolls of lengths up to 40 feet.

## ■ KEY COMPONENTS

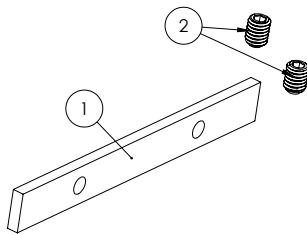
Pendant Kit Components



Note: Lead wire will either come out from side or back of channel

## ■ ADDITIONAL COMPONENTS

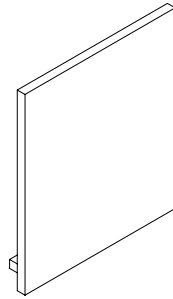
These are certain standard components that comes along with the ZENLITE® Lighting system as follows:



### **Metal Channel Connector**

Purpose: To connect to straight ZENLITE® Channels

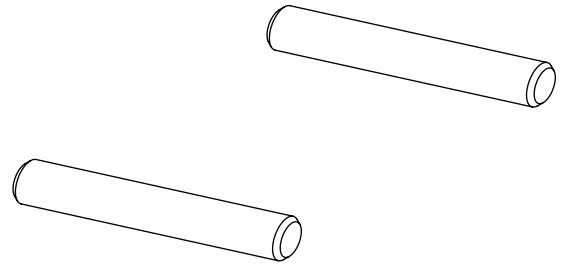
Part #: **ZNLT-CNCT-MTL**



### **End Cap**

Purpose: To be attached at the beginning of ZENLITE® channel

Part #: **ZNLT-ARC2-PM-EDCP**



### **Alignment Pins**

Purpose: To align multiple ZENLITE® channels during installation

Part #: **ZNLT-PINS**